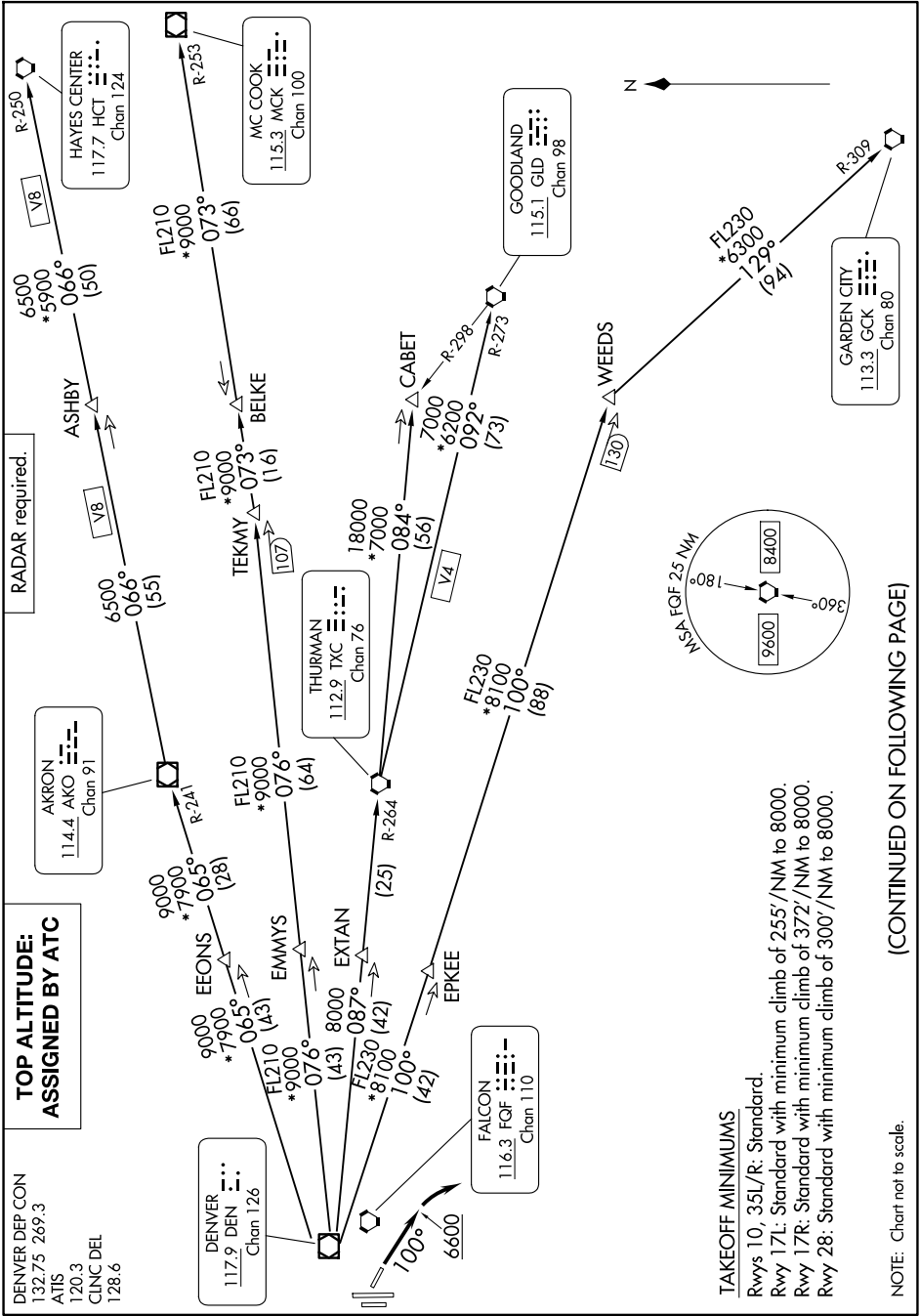


PLAINS TWO DEPARTURE

AL-5715 (FAA)

CENTENNIAL (APA)
DENVER, COLORADO

9200 N0R 60 01 0Z UN 2026 00R 11 1-MS



**TOP ALTITUDE:
ASSIGNED BY ATC**

DENVER DEP CON
132.75 269.3
ATIS
120.3
CLNC DEL
128.6

DENVER
117.9 DEN
Chan 126

AKRON
114.4 AKO
Chan 91

HAYES CENTER
117.7 HCT
Chan 124

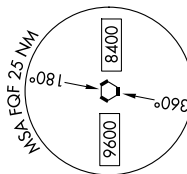
MC COOK
115.3 MCK
Chan 100

FALCON
116.3 FQF
Chan 110

GOODLAND
115.1 GID
Chan 98

GARDEN CITY
113.3 GCK
Chan 80

THURMAN
112.9 TXC
Chan 76



TAKEOFF MINIMUMS
 Rwy 10, 35L/R: Standard.
 Rwy 17L: Standard with minimum climb of 255'/NM to 8000.
 Rwy 17R: Standard with minimum climb of 372'/NM to 8000.
 Rwy 28: Standard with minimum climb of 300'/NM to 8000.

NOTE: Chart not to scale.

(CONTINUED ON FOLLOWING PAGE)

SW-1, 11 JUN 2026 to 09 JUL 2026

PLAINS TWO DEPARTURE