

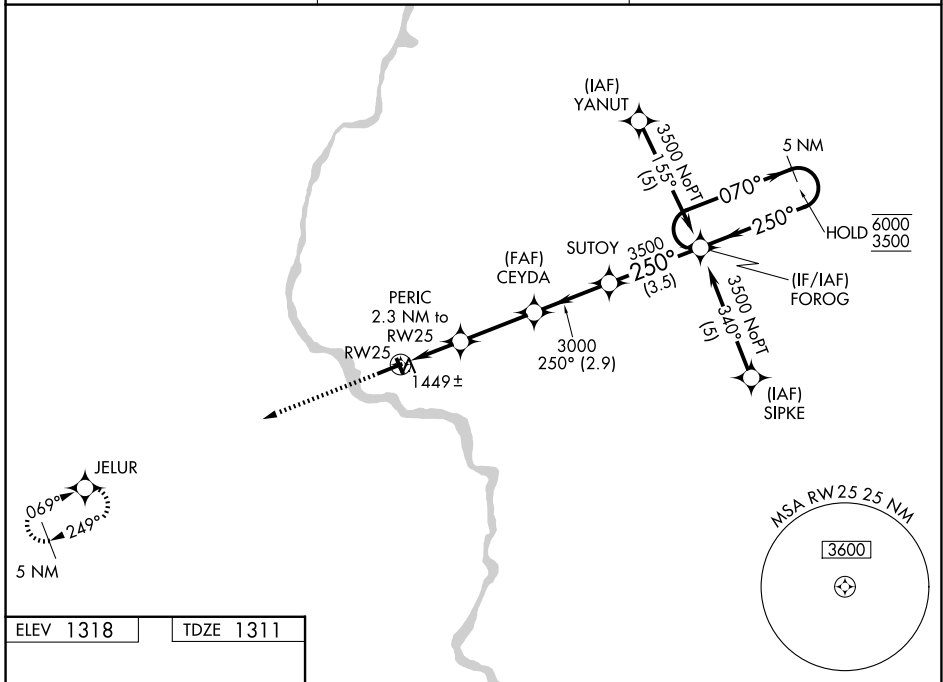
WAAS CH 49104 W25A	APP CRS 250°	Rwy Ldg TDZE 5101 1311	Apt Elev 1318
--	------------------------	--	-------------------------

RNAV (GPS) RWY 25

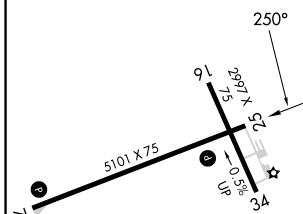
MERRILL MUNI (R.R.L)

RNP APCH - GPS.	MISSED APPROACH: Climb to 3500 direct JELUR and hold.
<p>▼</p> <p>▲ Circling Rwy 16, 34 NA at night. Rwy 25 helicopter visibility reduction below ¾ SM NA. For uncompensated Baro-VNAV systems, LNAV/VNAV NA below -17°C or above 54°C.</p>	

AWOS-3 119.925	MINNEAPOLIS CENTER 124.4 317.7	UNICOM 122.8 (CTAF) ①
--------------------------	--	---------------------------------



ELEV 1318	TDZE 1311
------------------	------------------



3500	JELUR	PERIC 2.3 NM to RWY 25	CEYDA 3000	SUTOY	FOROG	5 NM Holding Pattern
		1.1 NM to RWY 25	2.3 NM to RWY 25	2.9 NM	3.5 NM	
		2060	3000	3500	3500	6000 / 3500
						GP 3.00° TCH 40

	1.1 NM	1.2 NM	2.8 NM	2.9 NM	3.5 NM	
CATEGORY	A		B		C	D
LPV DA	1640-1		329 (400-1)			NA
LNAV/VNAV DA	1719-1½		408 (500-1½)			NA
LNAV MDA	1700-1		389 (400-1)		1700-1½ 389 (400-1½)	NA
CIRCLING	1760-1 442 (500-1)	1780-1 462 (500-1)	1920-1¾ 602 (700-1¾)			NA

REIL Rwy 7 and 25 ①
MIRL Rwy 16-34 and 7-25 ①

EC-3, 11 JUN 2026 to 09 JUL 2026

EC-3, 11 JUN 2026 to 09 JUL 2026