

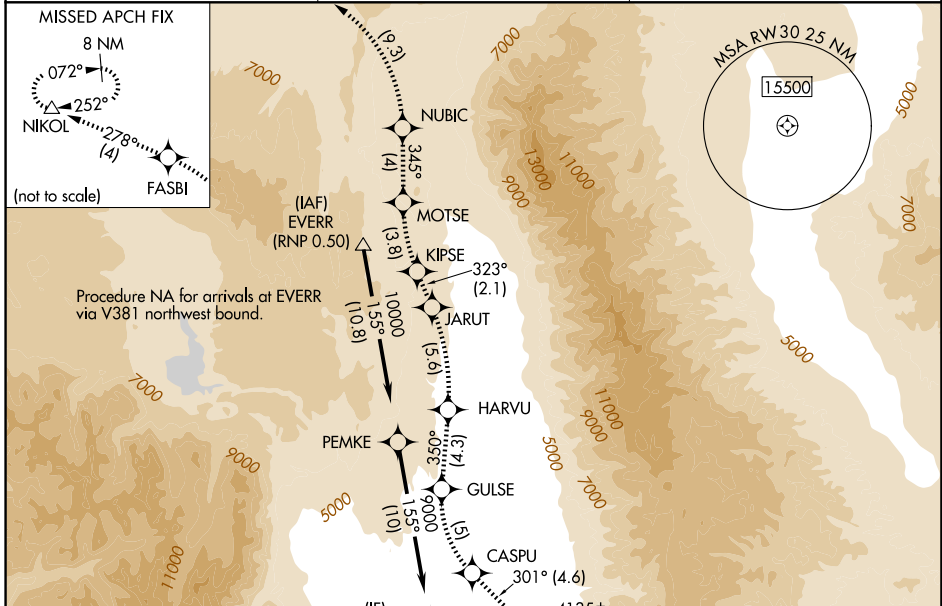
APP CRS 301°	Rwy Ldg TDZE Apt Elev	6743 4111 4124
------------------------	-----------------------------	---

RNAV (RNP) RWY 30

BISHOP (BIH)

RNP AR APCH, RF required.		MISSED APPROACH: Climb to 13000 via 301° track to CASPU, right turn to GULSE, 350° track to HARVU, left turn to JARUT, 323° track to KIPSE, right turn to MOTSE, 345° track to NUBIC, left turn to FASBI, 278° track to NIKOL and hold.
For uncompensated Baro-VNAV systems, procedure NA below -12°C or above 54°C.		

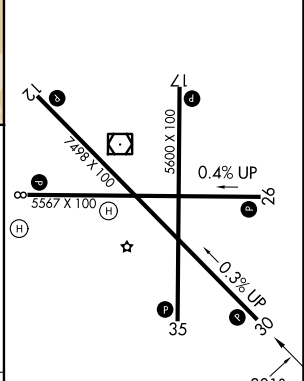
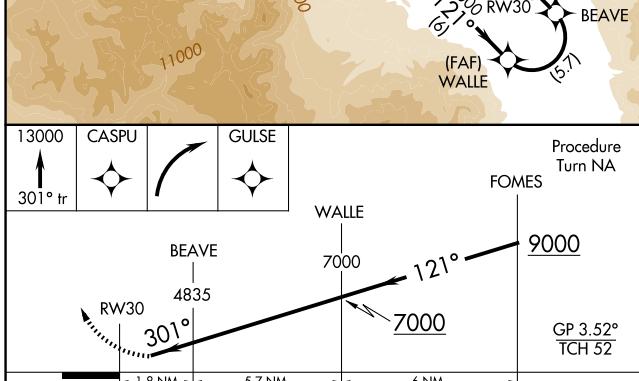
ASOS 119.025	OAKLAND CENTER 125.75 284.65	UNICOM 123.0 (CTAF)
------------------------	--	-------------------------------



SW-2, 11 JUN 2026 to 09 JUL 2026

SW-2, 11 JUN 2026 to 09 JUL 2026

ELEV 4124	TDZE 4111
-----------	-----------



CATEGORY	A	B	C	D
RNP 0.30 DA	4476-1	365 (400-1)		NA

AUTHORIZATION REQUIRED

MIRL Rwy 8-26, 12-30, and 17-35
REIL Rwy 12, 17, 30 and 35