

WAAS CH 81926 W15A	APP CRS 149°	Rwy ldg TDZE Apt Elev	5000 327 336
--	------------------------	-----------------------------	---

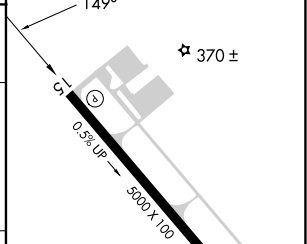
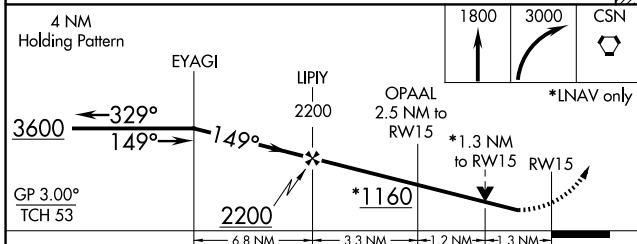
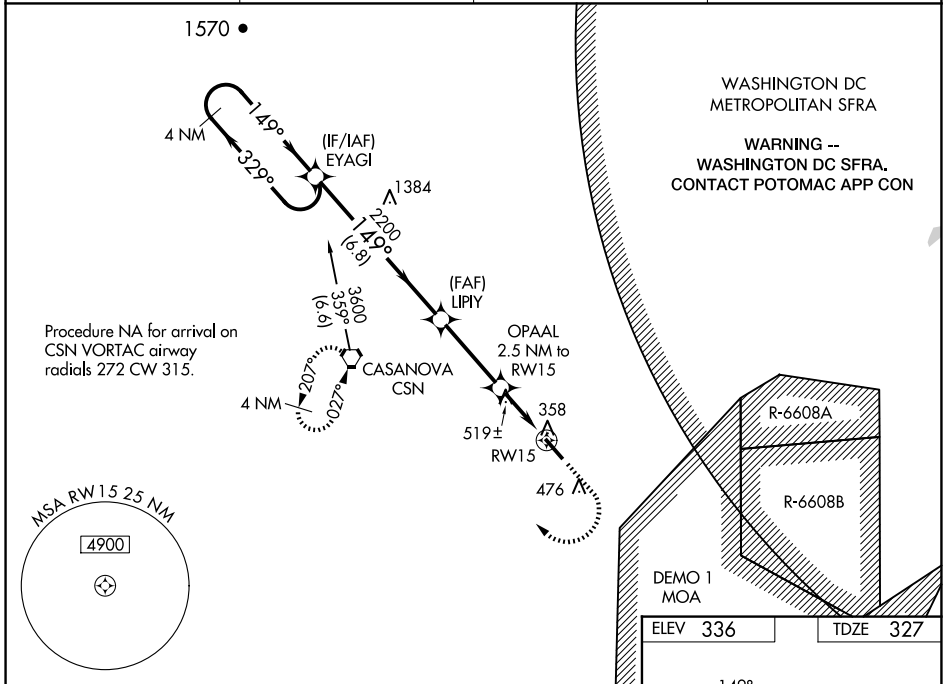
RNAV (GPS) RWY 15

WARRENTON/FAUQUIER (HWY)

⚠ Baro-VNAV NA when using Culppeper altimeter setting. For uncompensated Baro-VNAV systems, LNAV/VNAV NA below -11°C (13°F) or above 41°C (105°F). DME/DME RNP-0.3 NA. Helicopter visibility reduction below 3/4 SM NA. When local altimeter setting not received, use Culppeper altimeter setting: increase LPV DA to 549 feet; increase LNAV/VNAV DA to 607 feet and all visibilities 1/8 SM; increase all MDAs 40 feet and Circling Cat D visibility 1/4 SM.

MISSED APPROACH:
Climb to 1800 then climbing right turn to 3000 direct CSN VORTAC and hold.

AWOS-3 120.35	CJR AWOS-3 119.325	POTOMAC APP CON 128.525 306.925	UNICOM 122.7 (CTAF) 0
-------------------------	------------------------------	---	---------------------------------



CATEGORY	A	B	C	D
LPV DA		527-3/4	200 (200-3/4)	
LNAV/VNAV DA		585-3/4	258 (300-3/4)	
LNAV MDA	780-1	453 (500-1)	780-1 3/8	453 (500-1 3/8)
CIRCLING	780-1 444 (500-1)	800-1 464 (500-1)	880-1 1/2 544 (600-1 1/2)	980-2 644 (700-2)

REIL Rwy 15 and 33
HIRL Rwy 15-33 0

NE-3, 11 JUN 2026 to 09 JUL 2026

NE-3, 11 JUN 2026 to 09 JUL 2026