

WAAS CH 48916 W35A	APP CRS 351°	Rwy Ldg TDZE Apt Elev	5705 95 101
--	------------------------	-----------------------------	--

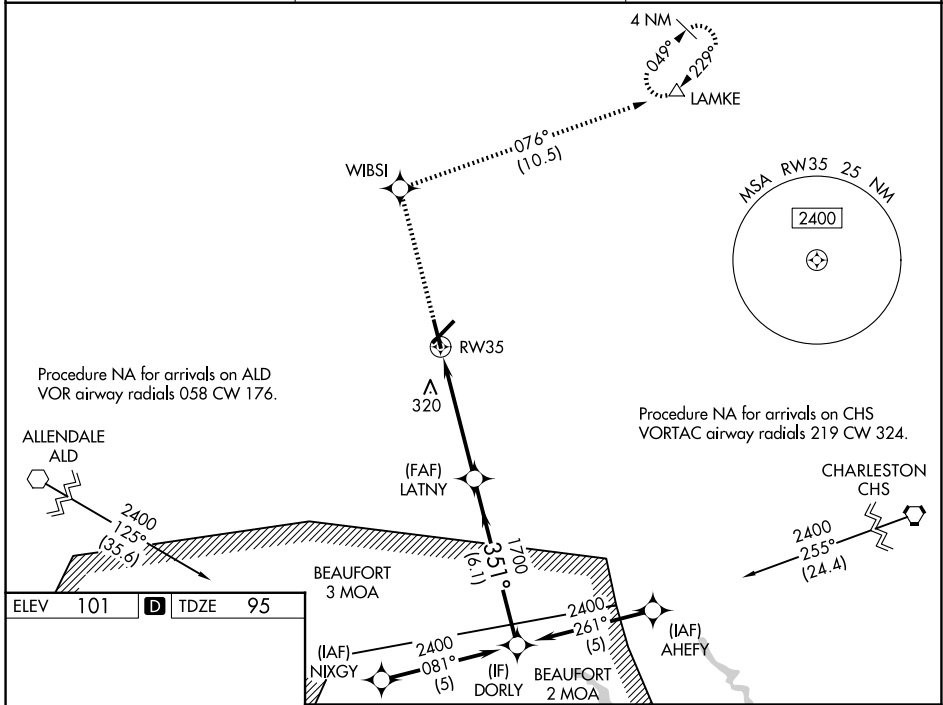
RNAV (GPS) RWY 35

LOWCOUNTRY RGNL (R.BW)

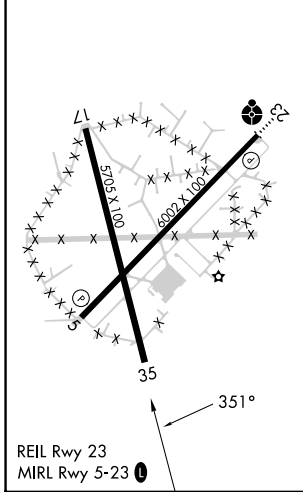
⚠ For uncompensated Baro-VNAV systems, LNAV/VNAV NA below -15°C (5°F) or above 54°C (130°F). Baro-VNAV and VDP NA when using Charleston AFB/Intl altimeter setting.
⚠ DME/DME RNP-0.3 NA. When local altimeter setting not received, use Charleston AFB/Intl altimeter setting: increase LPV DA to 476 feet and LNAV/VNAV DA to 525 feet and all MDA 80 feet; increase LPV visibility all Cats, LNAV/VNAV visibility all Cats, LNAV Cats C/D visibility, and Circling Cat D visibility ¼ mile; increase Circling Cat C visibility ½ mile.

MISSED APPROACH:
Climb to 2100 direct WBSI and on track 076° to LAMKE and hold.

AWOS-3PT 118.725	CHARLESTON APP CON 120.7 306.925	UNICOM 122.8 (CTAF) 0
----------------------------	--	---------------------------------



ELEV 101	D	TDZE 95
----------	----------	---------



2100	WBSI	tr 076°	LAMKE	LATNY	DORLY
				1700	2400
*LNAV only.		*1.3 NM to RW35			GP 3.00°
				1700	TCH 40
CATEGORY	A		B		D
LPV DA	398-1		303 (300-1)		
LNAV/VNAV DA	447-1¼		352 (400-1¼)		
LNAV MDA	560-1	465 (500-1)	560-1¾	465 (500-1¾)	
CIRCLING	620-1 519 (600-1)	640-1 539 (600-1)	700-1½ 599 (600-1½)	700-2 599 (600-2)	

SE-2, 11 JUN 2026 to 09 JUL 2026

SE-2, 11 JUN 2026 to 09 JUL 2026