

WAAS CH 82232 W05A	APP CRS 049°	Rwy Ldg TDZE Apt Elev	6002 96 101
--	------------------------	-----------------------------	--

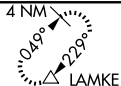
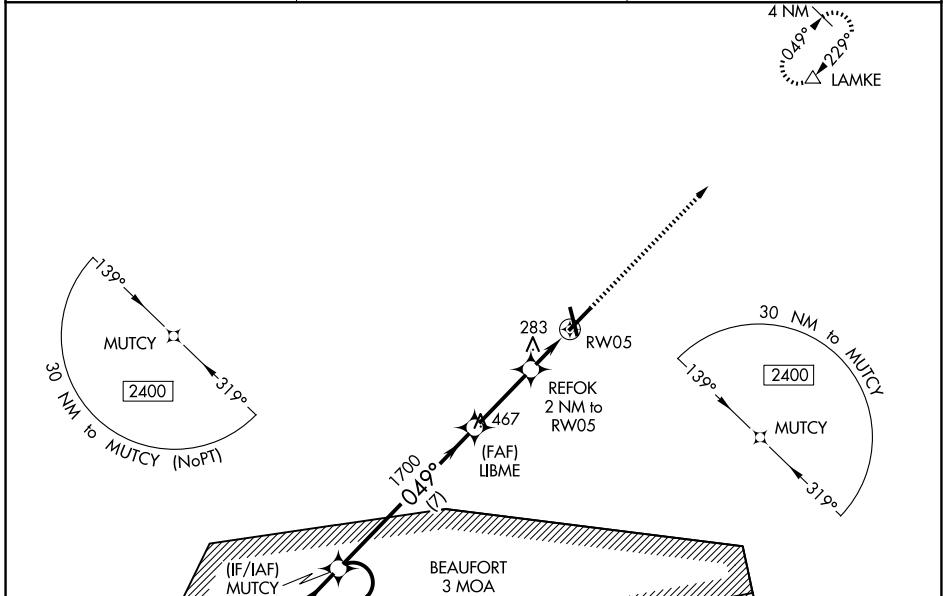
RNAV (GPS) RWY 5

LOWCOUNTRY RGNL (R.B.W)

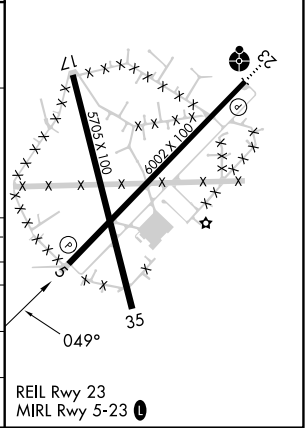
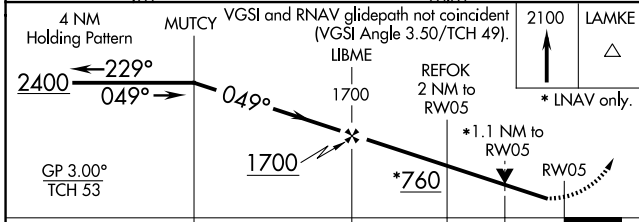
⚠ For uncompensated Baro-VNAV systems, procedure NA below -15°C (5°F) or above 54°C (130°F).
⚠ DME/DME RNP-0.3 NA. VDP and Baro-VNAV NA when using Charleston AFB/Intl altimeter setting.
 Helicopter visibility reduction below ¼ SM NA. When local altimeter setting not received, use Charleston AFB/Intl altimeter setting and increase all DA 78 feet and all MDA 80 feet; increase LPV, LNAV/VNAV all Cats and Circling Cat D visibility ¼ mile, increase LNAV Cat C - D visibility ½ mile, increase Circling Cat C visibility ½ mile.

MISSED APPROACH:
 Climb to 2100 direct LAMKE and hold.

AWOS-3PT 118.725	CHARLESTON APP CON 120.7 306.925	UNICOM 122.8 (CTAF) 0
----------------------------	--	---------------------------------



ELEV	101	TDZE	96
------	-----	------	----



CATEGORY	A	B	C	D
LPV DA		431-1 1/8	335 (400-1 1/8)	
LNAV/VNAV DA		507-1 3/8	411 (500-1 3/8)	
LNAV MDA	540-1	444 (500-1)	540-1 3/8	444 (500-1 3/8)
CIRCLING	620-1 519 (600-1)	640-1 539 (600-1)	700-1 1/2 599 (600-1 1/2)	700-2 599 (600-2)

REIL Rwy 23
 MIRL Rwy 5-23 0

SE-2, 11 JUN 2026 to 09 JUL 2026

SE-2, 11 JUN 2026 to 09 JUL 2026