

BORRN SIX DEPARTURE (RNAV)

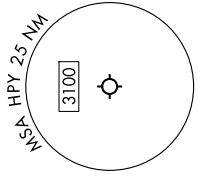
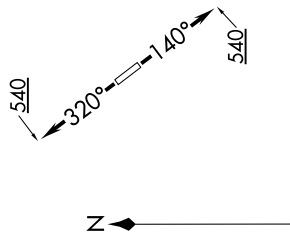
9200 UN 60 of 2020 UN 11 '9-C-S

CTAF
122.8
HOUSTON DEP CON
134.45 284.0

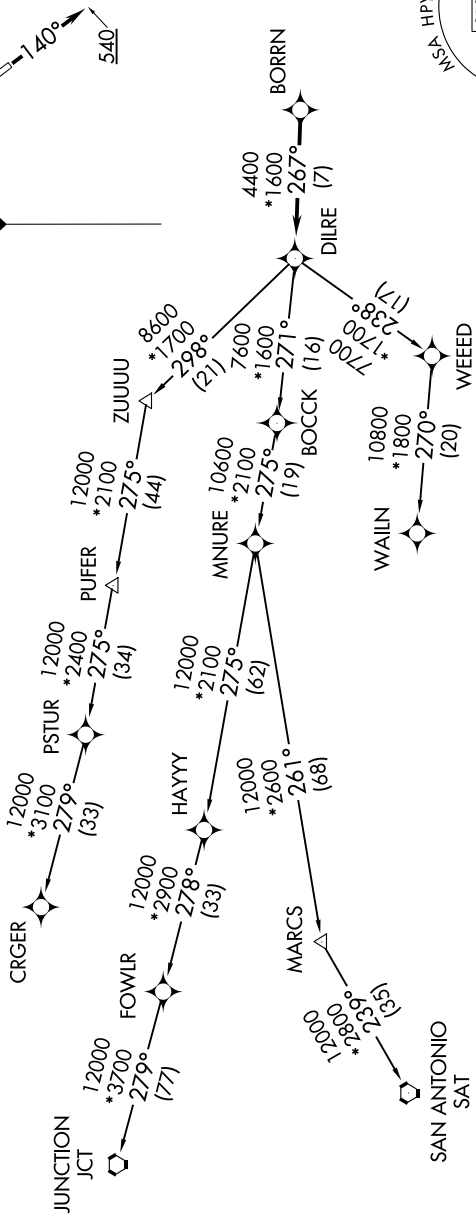
RNAV 1 - DME/DME/IRU or GPS.
RADAR required.

TOP ALTITUDE:
ASSIGNED BY ATC

TAKEOFF MINIMUMS
Rwys 14, 32: Standard with minimum
climb of 500'/NM to 540.



NOTE: Chart not to scale.



NOTE: CRGR-TRANSITION ATC assigned only
for aircraft departing 54T, AXH, EFD, GLS,
HPY, IWS, LBX, LVJ, SGR, TME, T00, T41.

(CONTINUED ON FOLLOWING PAGE)

SC-5, 11 JUN 2026 to 09 JUL 2026

BORRN SIX DEPARTURE (RNAV)