

APP CRS 271°	Rwy Ldg 3556
	TDZE 1183
	Apt Elev 1190

RNAV (GPS) RWY 27

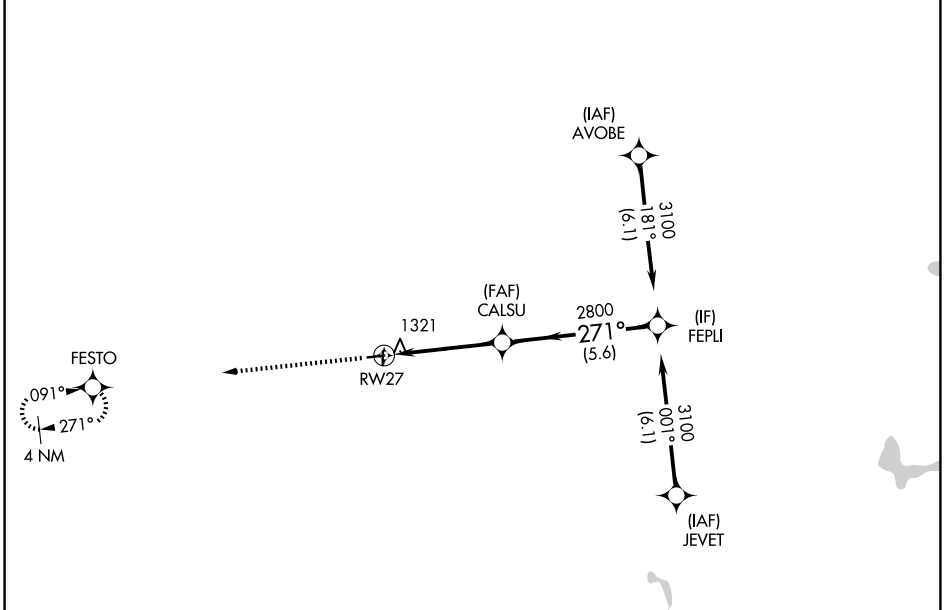
MEDINA MUNI (1G5)

RNP APCH - GPS.

⚠ Rwy 27 helicopter visibility reduction below 3/4 SM NA.
Use CLE altimeter setting.

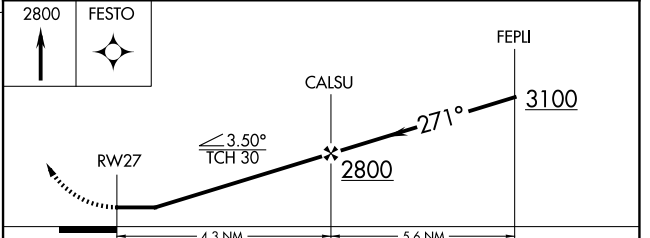
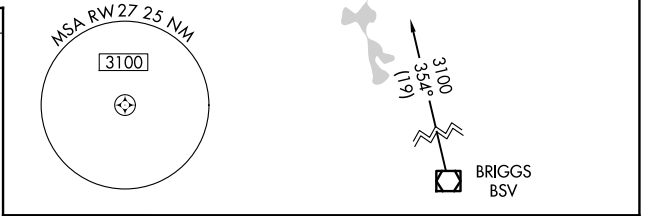
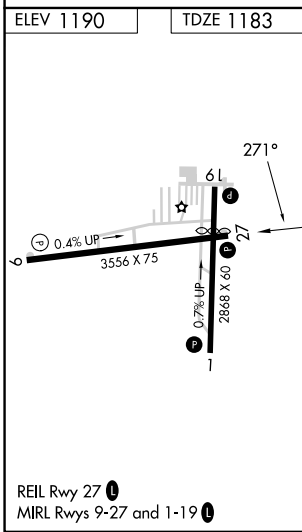
MISSED APPROACH: Climb to 2800 direct FESTO and hold.

CLE ASOS 127.85	CLEVELAND APP CON 125.35 346.325	UNICOM 123.0 (CTAF) 0
---------------------------	--	---------------------------------



EC-2, 11 JUN 2026 to 09 JUL 2026

EC-2, 11 JUN 2026 to 09 JUL 2026



CATEGORY	A	B	C	D
LNAV MDA	1700-1	517 (600-1)	1700-1 3/8 517 (600-1 3/8)	NA