

WAAS CH 66028 W27A	APP CRS 274°	Rwy Ldg TDZE Apt Elev	3882 777 781
--	------------------------	-----------------------------	---

RNAV (GPS) RWY 27

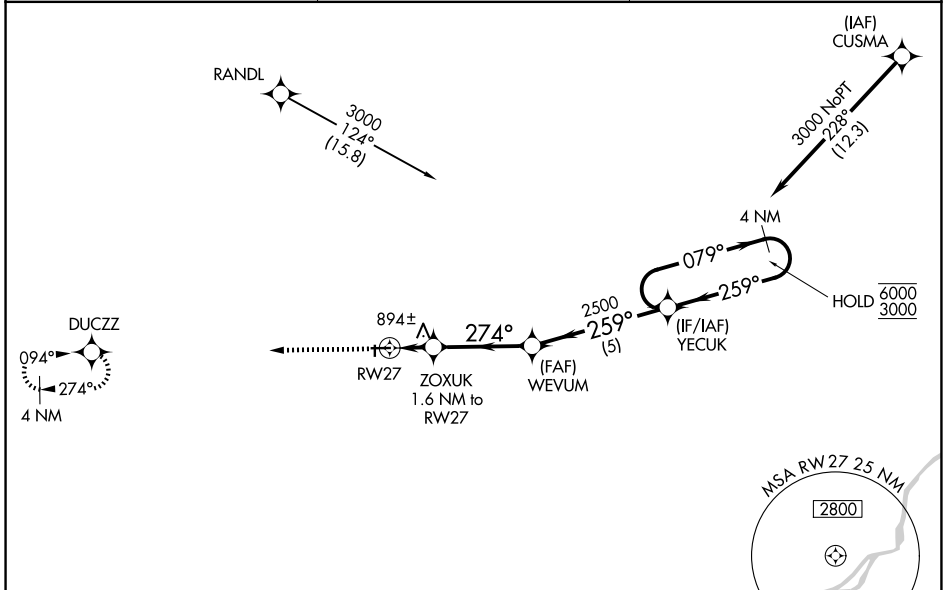
FULTON COUNTY (USE)

RNP APCH - GPS.

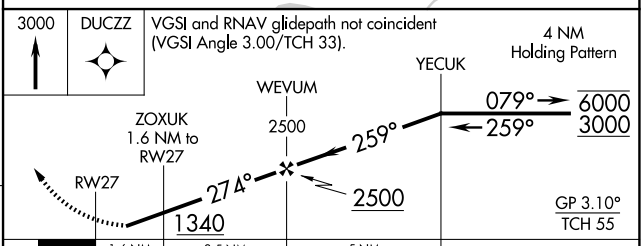
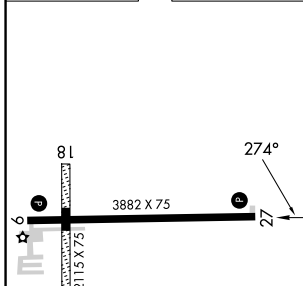
⚠ Rwy 27 helicopter visibility reduction below 3/4 SM NA.
⚠ Circling NA to Rwy 18 and 36.
 For uncompensated Baro-VNAV systems, LNAV/VNAV NA below -16°C or above 54°C.
 Circling Rwy 9 NA at night.

MISSED APPROACH:
 Climb to 3000 direct
 DUCZZ and hold.

AWOS-3P 127.375	TOLEDO APP CON 134.35 317.55	UNICOM 123.0 (CTAF)
---------------------------	--	-------------------------------



ELEV 781	TDZE 777
-----------------	-----------------



CATEGORY	A	B	C	D
LPV DA		1092-1	315 (400-1)	
LNAV/VNAV DA		1095-1	318 (400-1)	
LNAV MDA	1180-1	403 (400-1)	1180-1½	403 (400-1½)
CIRCLING	1280-1	499 (500-1)	1480-2 699 (700-2)	1480-2¼ 699 (700-2¼)

REIL Rwy 9 and 27 **Ⓛ**
 MIRL Rwy 9-27 **Ⓛ**

EC-2, 11 JUN 2026 to 09 JUL 2026

EC-2, 11 JUN 2026 to 09 JUL 2026