

APP CRS **025°**  
 Rwy Idg **3498**  
 TDZE **641**  
 Apt Elev **641**

# RNAV (GPS) RWY 4

MARION COUNTY/BROWN FLD (APT)

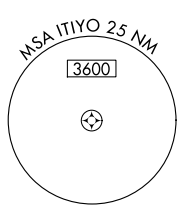
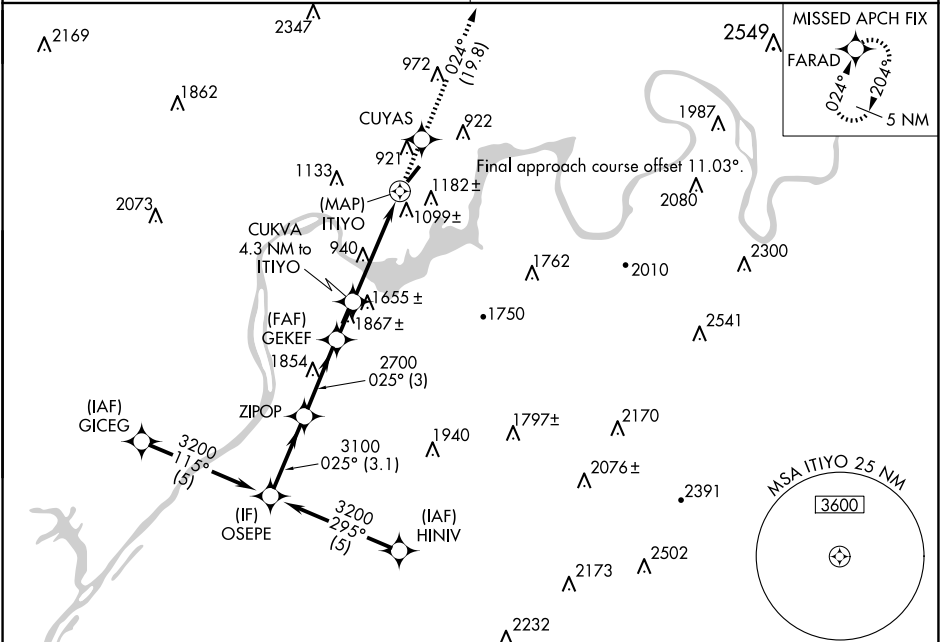
RNP APCH-GPS

Procedure NA at night. Rwy 4 helicopter visibility reduction below 1 SM NA.  
 Obtain local altimeter setting on CTAF; when not received, use Chattanooga altimeter setting and increase all MDAs 60 feet and LNAV Cat A visibility ¼ SM.

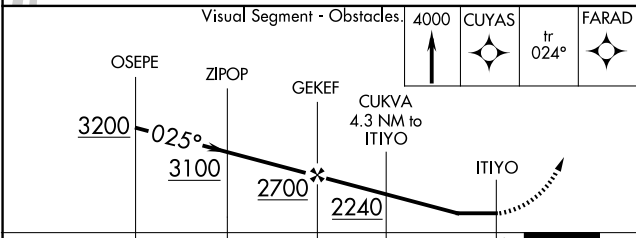
MISSED APPROACH: Climb to 4000 direct CUYAS and on track 024° to FARAD and hold.

CHATTANOOGA APP CON \*  
**119.2 323.075**

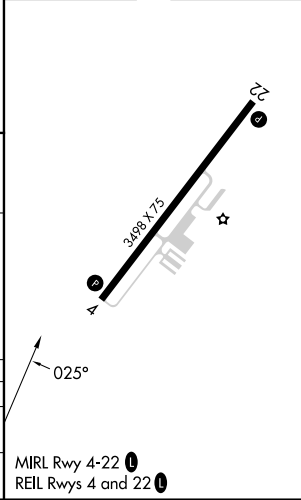
UNICOM  
**122.8 (CTAF)**



ELEV **641** TDZE **641**



CATEGORY	A	B	C	D
LNAV MDA	1500-1 859 (900-1)	1500-1¼ 859 (900-1¼)	1500-2½ 859 (900-2½)	NA
CIRCLING	1560-1¼ 919 (1000-1¼)	1840-1½ 1199 (1200-1½)	1860-3 1219 (1300-3)	NA



SE-1, 11 JUN 2026 to 09 JUL 2026

SE-1, 11 JUN 2026 to 09 JUL 2026