

WAAS CH <b>49144</b> <b>W14A</b>	APP CRS <b>140°</b>	Rwy Ldg TDZE Apt Elev	<b>6000</b> <b>181</b> <b>187</b>
--	------------------------	-----------------------------	---

# RNAV (GPS) RWY 14

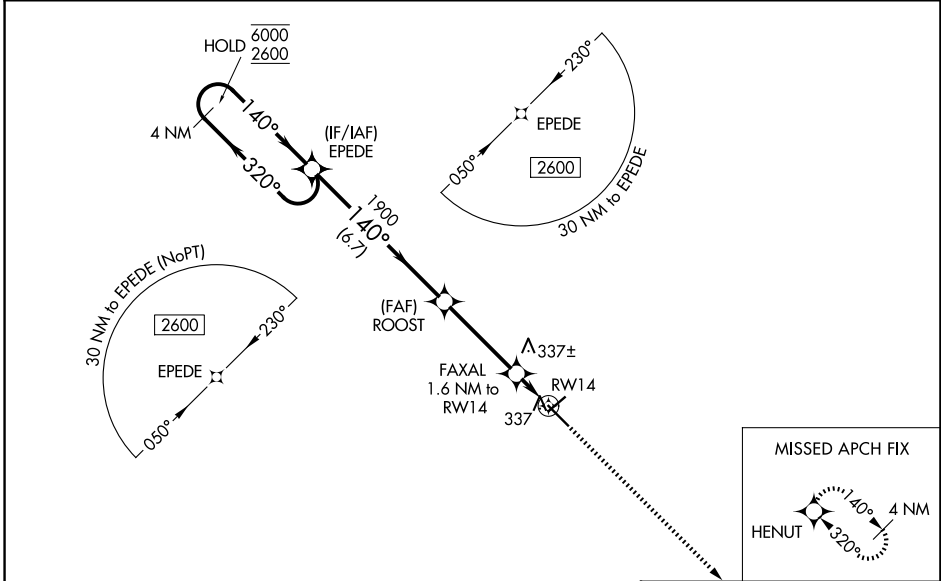
STATESBORO-BULLOCH COUNTY (TBR)

RNP APCH-GPS.

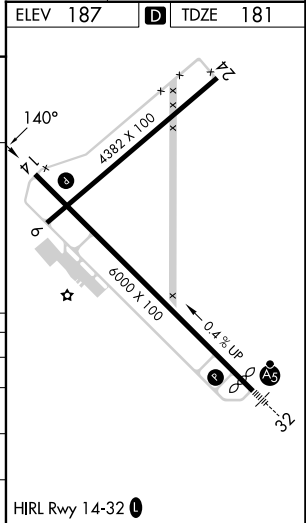
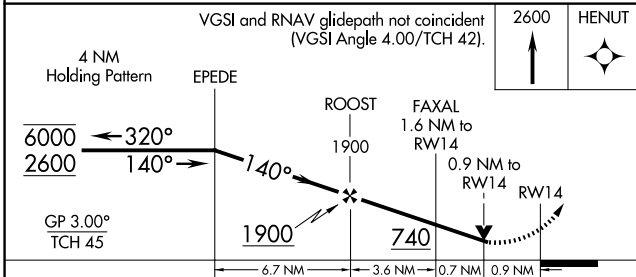
⚠ Circling to Rwy 6/24 NA at night. Baro-VNAV and VDP NA when using Sylvania altimeter setting.  
 ⚠ Rwy 14 helicopter visibility reduction below 3/4 SM NA. For uncompensated Baro-VNAV systems, LNAV/VNAV NA below -15°C or above 54°C. When local altimeter setting not received, use Sylvania altimeter setting and increase LPV DA to 525 feet and all visibilities 1/8 SM. Increase LNAV/VNAV DA to 547 feet; increase all MDAs 40 feet and LNAV visibility Cat C/D 1/4 SM, and Circling visibility Cat C 1/4 SM.

MISSED APPROACH:  
Climb to 2600 direct HENUT and hold.

AWOS-3 <b>119.025</b>	SAVANNAH APP CON ★ <b>118.4 307.225</b>	UNICOM <b>122.725 (CTAF) 0</b>
--------------------------	--	-----------------------------------



ELEV 187	<b>D</b> TDZE 181
----------	-------------------



CATEGORY	A	B	C	D
LPV DA		496-7/8	315 (400-7/8)	
LNAV/VNAV DA		518-1	337 (400-1)	
LNAV MDA	600-1	419 (500-1)	600-1 1/8	419 (500-1 1/8)
CIRCLING	640-1 453 (500-1)	740-1 553 (600-1)	840-1 1/4 653 (700-1 1/4)	860-2 1/4 673 (700-2 1/4)

SE-4, 11 JUN 2026 to 09 JUL 2026

SE-4, 11 JUN 2026 to 09 JUL 2026