

WAAS CH 90237 W03A	APP CRS 028°	Rwy Ldg TDZE 2595 Apt Elev 2595	3701
--	------------------------	---	-------------

RNAV (GPS) RWY 3

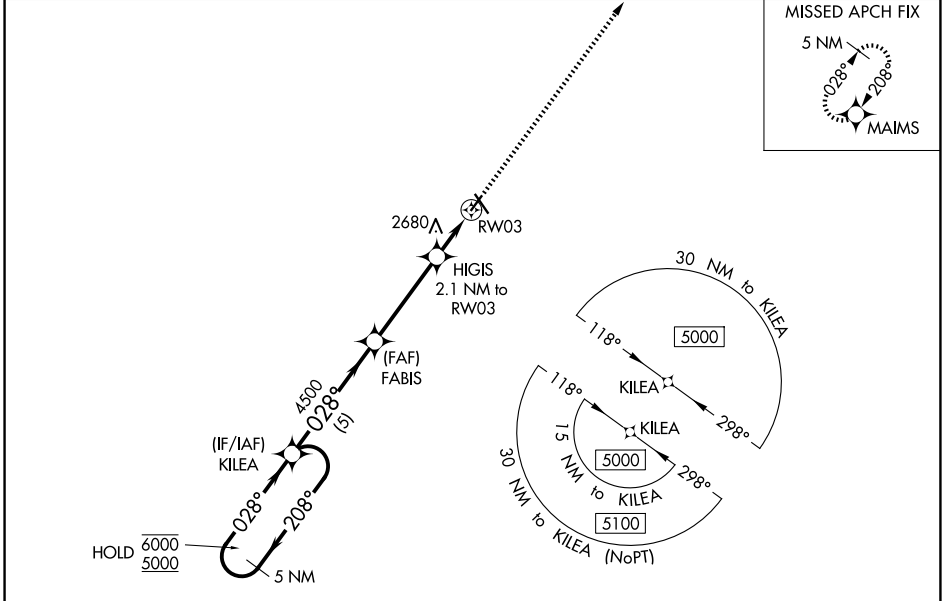
MILLER FLD (VTN)

RNP APCH - GPS.

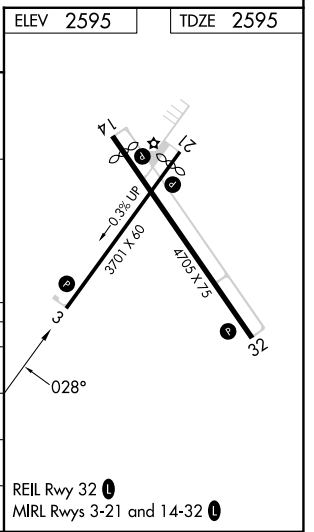
⚠ For uncompensated Baro-VNAV systems, LNAV/VNAV NA below -25°C or above 54°C. When local altimeter setting not received, use ANW altimeter setting and increase all DA to 2916 feet. Increase all MDAs 80 feet. Baro-VNAV and VDP NA when using ANW altimeter setting.

MISSED APPROACH: Climb to 5000 direct MAIMS and hold, continue climb-in-hold to 5000.

ASOS 118.075	DENVER CENTER 127.95 338.2	UNICOM 122.8 (CTAF) 0
------------------------	--------------------------------------	---------------------------------



5 NM Holding Pattern		KILEA		FABIS		HIGIS 2.1 NM to RWY 3		RWY 3	
6000 ← 208°		5000 → 028°		4500		3300		5000 MAIMS	
GP 3.00°		TCH 39		4500		1 NM to RWY 3		1 NM to RWY 3	
5 NM		3.8 NM		1.1 NM		1 NM			
CATEGORY	A	B	C	D					
LPV DA	2845-1	250 (300-1)	NA						
LNAV/VNAV DA	2845-1	250 (300-1)	NA						
LNAV MDA	2940-1	345 (400-1)	NA						
CIRCLING	3080-1 485 (500-1)	3560-1½ 965 (1000-1½)	NA						



NC-2, 11 JUN 2026 to 09 JUL 2026

NC-2, 11 JUN 2026 to 09 JUL 2026