

VOR LOA <b>110.8</b> Chan 45	APP CRS <b>131°</b>	Rwy Idg TDZE Apt Elev <b>NA</b> <b>NA</b> <b>363</b>
------------------------------------	------------------------	---

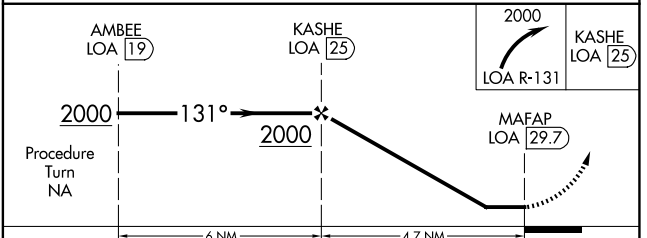
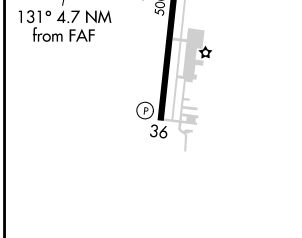
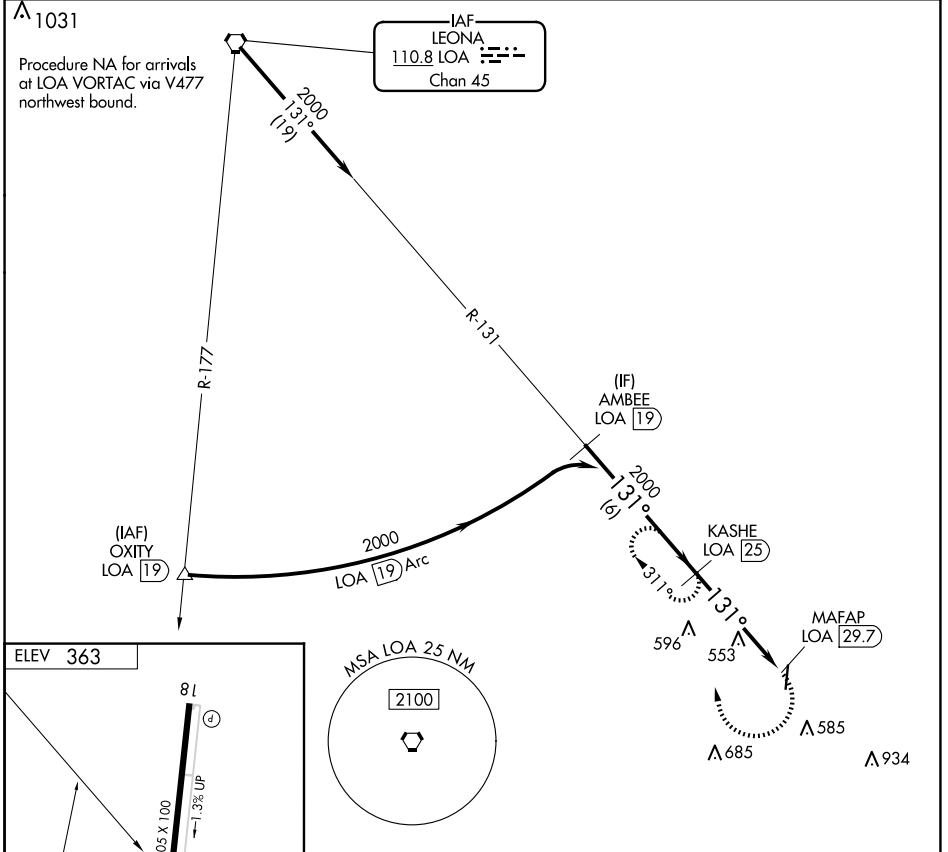
# VOR/DME-A

HUNTSVILLE MUNI (UTS)

**⚠** When local altimeter setting not received, use Conroe/North Houston Rgnl altimeter setting and increase MDA 80 feet, increase Circling Cat C visibility ¼ mile.

**⚠** MISSED APPROACH: Climbing right turn to 2000 via LOA VORTAC R-131 to KASHE/25 DME and hold.

ASOS <b>119.425</b>	HOUSTON CENTER <b>134.8 269.6</b>	UNICOM <b>122.8 (CTAF)</b>
------------------------	--------------------------------------	-------------------------------



REIL Rwys 18 and 36	MIRL Rwy 18-36			
CATEGORY	A	B	C	D
CIRCLING	1000-1 637 (700-1)	1000-1¼ 637 (700-1¼)	1120-2¼ 757 (800-2¼)	NA

SC-5, 11 JUN 2026 to 09 JUL 2026

SC-5, 11 JUN 2026 to 09 JUL 2026