

WAAS CH 49040 W26A	APP CRS 255°	Rwy Ldg TDZE Apt Elev	3438 186 194
--	------------------------	-----------------------------	---

RNAV (GPS) RWY 26

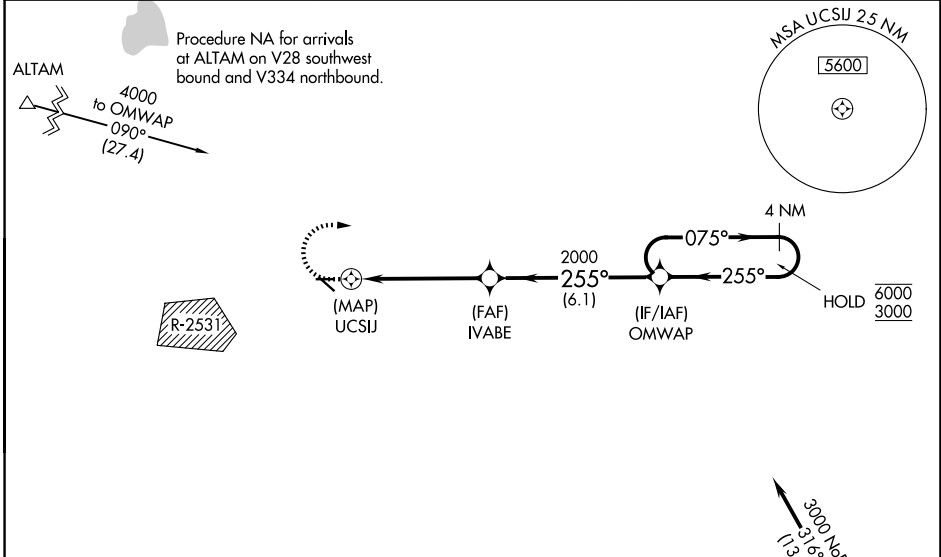
TRACY MUNI (TCY)

RNP APCH - GPS.

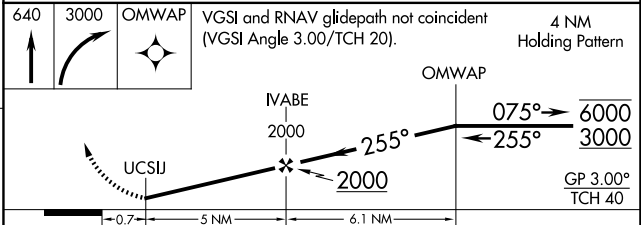
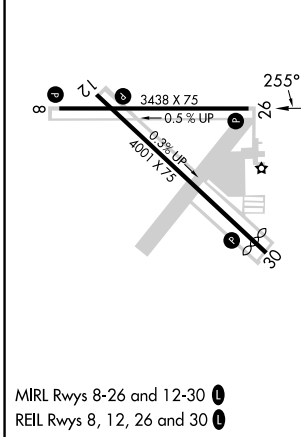
▼ Rwy 26 helicopter visibility reduction below 3/4 SM NA. Circling NA southwest of Rwy 12-30. For uncompensated Baro-VNAV systems, LNAV/VNAV NA below -15°C or above 54°C. Baro-VNAV NA when using SCK altimeter setting. When local altimeter setting not received, use SCK altimeter setting and increase LPV DA to 496 feet and all visibilities 1/2 SM. Increase LNAV/VNAV DA to 553 feet and all visibilities 1/2 SM. Increase all MDAs 60 feet and LNAV visibility Cat C 1/4 SM.

▲ MISSED APPROACH: (Do not exceed 210K until OMWAP) Climb to 640 then climbing right turn to 3000 direct OMWAP and hold, continue climb-in-hold 3000.

AWOS-3 118.375	NORCAL APP CON 123.85 278.3	UNICOM 123.075 (CTAF) 0
--------------------------	---------------------------------------	-----------------------------------



ELEV 194	TDZE 186
----------	----------



CATEGORY	A	B	C	D
LPV DA	436-3/4	250 (300-3/4)		NA
LNAV/VNAV DA	493-7/8	307 (300-7/8)		NA
LNAV MDA	540-1	354 (400-1)	580-1/8 394 (400-1/8)	NA
CIRCLING	580-1 386 (400-1)	660-1 466 (500-1)	660-1/2 466 (500-1/2)	NA