

VOR/DME MOD 114.6 Chan 93	APP CRS 263°	Rwy Ldg TDZE 186 Apt Elev 193	3438
---	------------------------	---	-------------

VOR RWY 26

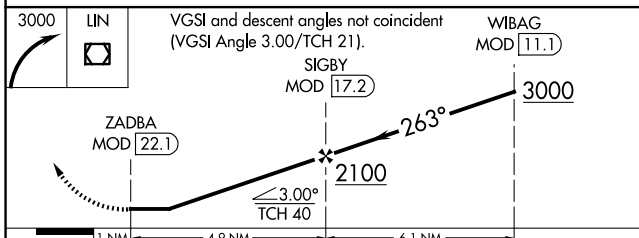
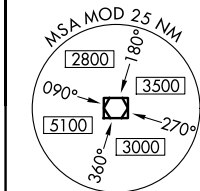
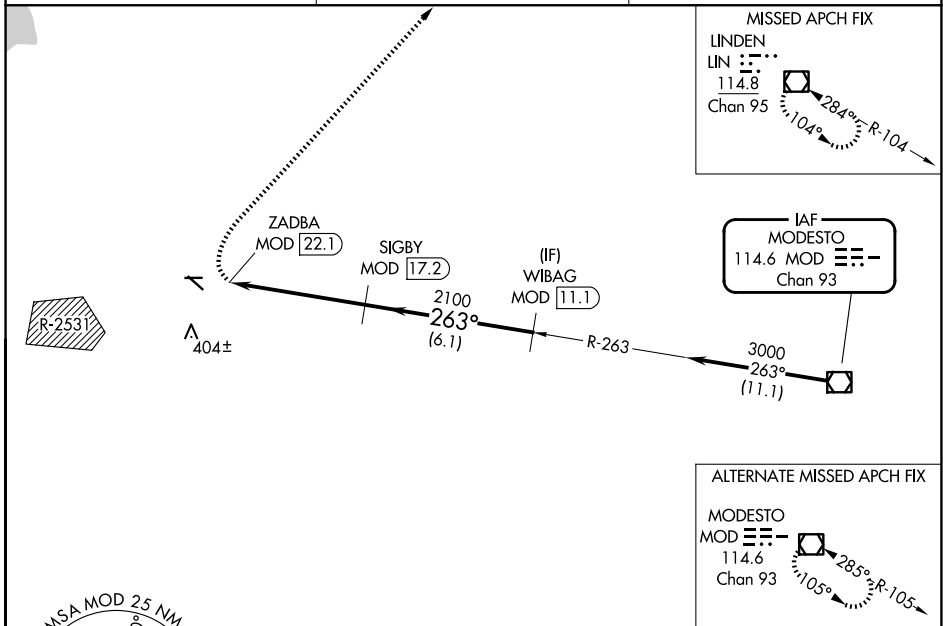
TRACY MUNI (TCY)

DME required.

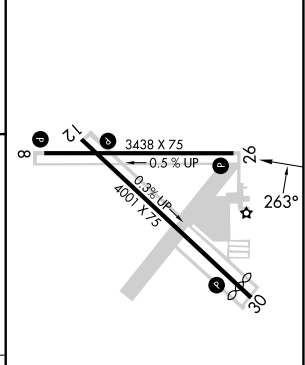
⚠ Circling NA southwest of Rwy 12-30. Circling Rwy 30 NA at night. Rwy 26 helicopter visibility reduction below 3/4 SM NA. When local altimeter setting not received, use Stockton altimeter setting: increase all MDAs 60 feet and visibility Cat C 1/2 SM.

MISSED APPROACH:
Climbing right turn to 3000
direct LIN VOR/DME and hold.

AWOS-3 118.375	NORCAL APP CON 123.85 278.3	UNICOM 123.075 (CTAF) 0
--------------------------	---------------------------------------	-----------------------------------



ELEV 193	TDZE 186
----------	----------



CATEGORY	A	B	C	D
S-26	760-1¼	574 (600-1¼)	760-1⅝ 574 (600-1⅝)	NA
CIRCLING	760-1¼	567 (600-1¼)	760-1⅝ 567 (600-1⅝)	NA

MIRL Rwy 8-26 and 12-30
REIL Rwy 8, 12, 26 and 30

SW-2, 11 JUN 2026 to 09 JUL 2026

SW-2, 11 JUN 2026 to 09 JUL 2026