

WAAS CH 70423 W35A	APP CRS 352°	Rwy Ldg 4305 TDZE 1616 Apt Elev 1616
--	------------------------	---

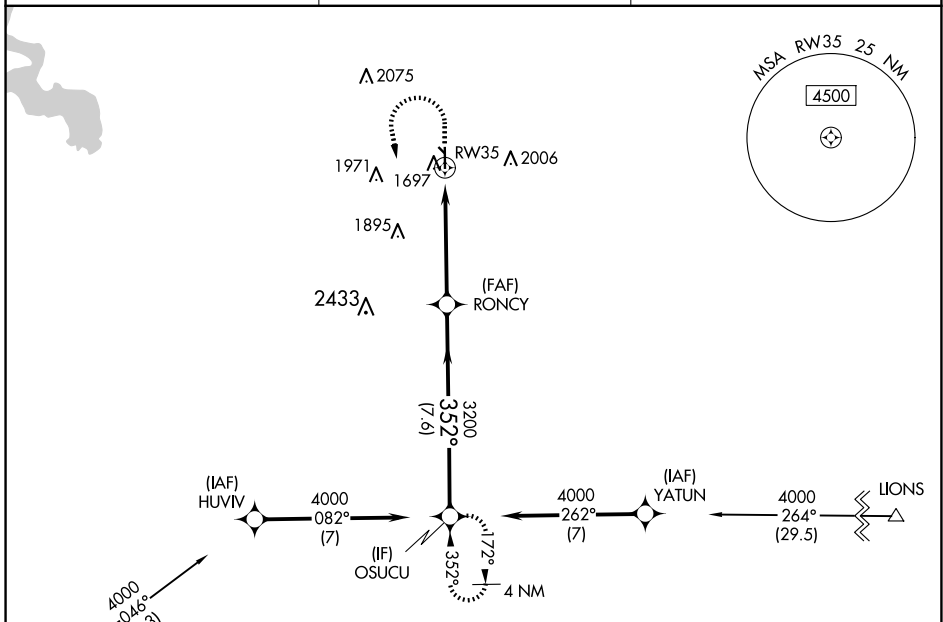
RNAV (GPS) RWY 35

CLINTON RGNL (CLK)

⚠ DME/DME RNP-0.3 NA. For uncompensated Baro-VNAV systems, LNAV/VNAV NA below -12°C (11°F) or above 54°C (130°F). Circling NA to Rwy 13 and 31. When local altimeter setting not received, use Weatherford altimeter setting; Increase DA to 1902 and all visibilities ½ mile; increase all MDA 40 feet and visibility Cat C ¼ mile. Baro-VNAV and VDP NA when using Weatherford altimeter setting.

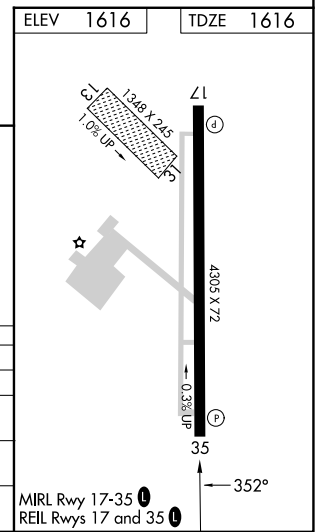
MISSED APPROACH: Climb to 2400 then climbing left turn to 4000 direct OSUCU and hold.

AWOS-3 119.225	FORT WORTH CENTER 128.4 269.37	UNICOM 122.8 (CTAF) 0
--------------------------	--	---------------------------------



BURNS FLAT BFV
Procedure NA for arrival on BFV
VORTAC airway radials 055 CW 098.

2400	4000	OSUCU	VGSi and RNAV glidepath not coincident (VGSi Angle 3.00/TCH 40).		OSUCU
*LNAV only.		*1.3 NM to RW35	RONCY	3200	4000
RW35		1.3 NM	3.6 NM	7.6 NM	GP 3.00° TCH 40
CATEGORY	A	B	C	D	
LPV DA	1866-7/8	250 (300-7/8)		NA	
LNAV/VNAV DA	1870-7/8	254 (300-7/8)		NA	
LNAV MDA	2040-1	424 (500-1)	2040-1 1/4 424 (500-1 1/4)	NA	
C CIRCLING	2100-1 484 (500-1)	2220-1 604 (700-1)	2320-2 704 (800-2)	NA	



SC-1, 11 JUN 2026 to 09 JUL 2026

SC-1, 11 JUN 2026 to 09 JUL 2026