

WAAS CH 70708 W36A	APP CRS 001°	Rwy Idg TDZE 239 Apt Elev 239
--	------------------------	---

RNAV (GPS) RWY 36

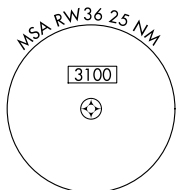
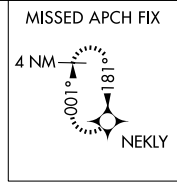
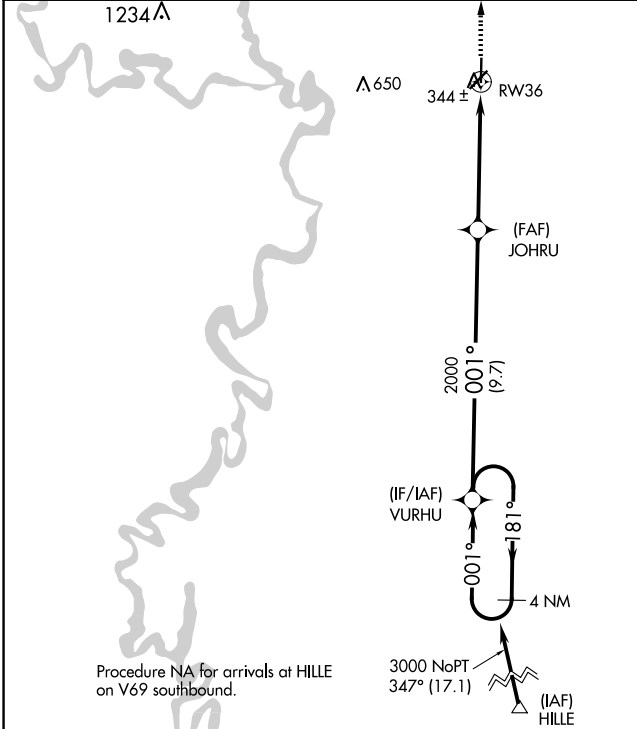
NEWPORT RGNL (M19)

RNP APCH-GPS.

⚠ Baro-VNAV NA when using Batesville altimeter setting. For uncompensated Baro-VNAV systems, LNAV/VNAV NA below -15°C or above 54°C. When local altimeter setting not received, use Batesville altimeter setting: increase LPV DA to 575 feet and all visibilities ½ SM; increase LNAV/VNAV DA to 700 feet and all visibilities ½ SM; increase all MDAs 100 feet and visibility Cats C ¼ SM and D ½ SM. VDP NA when using Batesville altimeter setting.

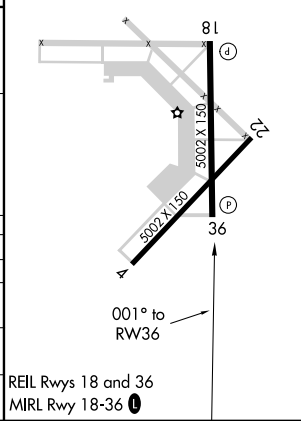
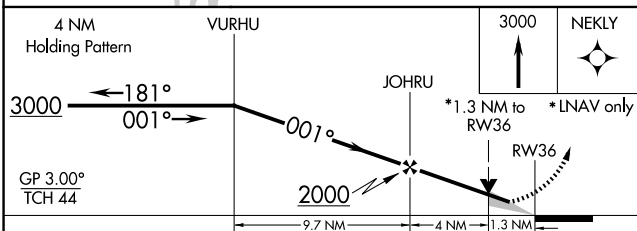
MISSED APPROACH: Climb to 3000 direct NEKLY and hold.

AWOS-3PT 118.15	MEMPHIS CENTER 120.075 289.4	UNICOM 122.8 (CTAF) ①
---------------------------	--	---------------------------------



Procedure NA for arrivals at HILLE on V69 southbound.

ELEV 239	TDZE 239
----------	----------



CATEGORY	A	B	C	D
LPV DA	489-¾ 250 (300-¾)			
LNAV/VNAV DA	614-1¼ 375 (400-1¼)			
LNAV MDA	700-1	461 (500-1)	700-1¼ 461 (500-1¼)	700-1½ 461 (500-1½)
CIRCLING	760-1	521 (600-1)	760-1½ 521 (600-1½)	900-2 661 (700-2)

REIL Rwy 18 and 36
MIRL Rwy 18-36 ①

SC-1, 11 JUN 2026 to 09 JUL 2026

SC-1, 11 JUN 2026 to 09 JUL 2026