

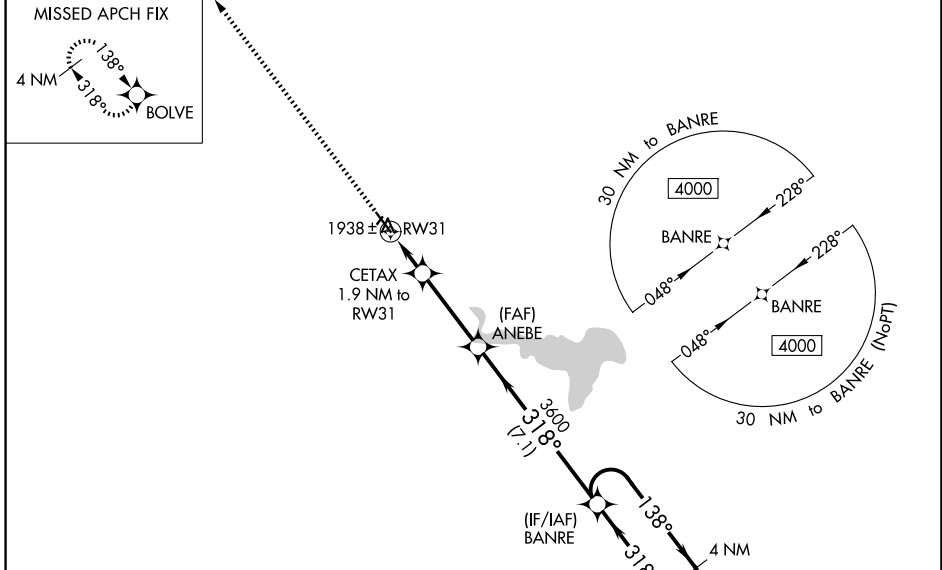
WAAS CH 93638 W31A	APP CRS 318°	Rwy Ldg 5101 TDZE 1900 Apt Elev 1907
--	------------------------	---

RNAV (GPS) RWY 31

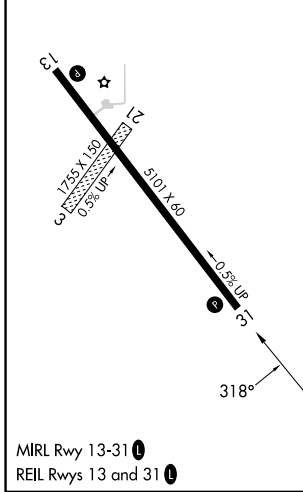
PHILLIPSBURG MUNI (PHG)

RNP APCH - GPS.	<p>⚠ Baro-VNAV NA when using Hays Rgnl altimeter setting. For uncompensated Baro-VNAV systems, LNAV/VNAV NA below -18°C or above 54°C. Circling NA northeast of Rwy 13-31. Rwy 31 helicopter visibility reduction below 1 SM NA. Circling NA to Rws 3 and 21. When local altimeter setting not received, use Hays Rgnl altimeter setting and increase all DA and MDA 140 feet, increase LPV and LNAV/VNAV visibilities ¼ mile all Cats and LNAV and Circling Cat C visibility ¼ mile.</p>	MISSED APPROACH: Climb to 4000 direct BOLVE and hold.
-----------------	--	---

AWOS-3PT 119.125	DENVER CENTER 132.7 226.675	UNICOM 122.8 (CTAF) 0
----------------------------	---------------------------------------	---------------------------------



ELEV 1907	TDZE 1900
-----------	-----------



4000	BOLVE	VGSI and RNAV glidepath not coincident (VGSI Angle 3.00/TCH 43).			
		ANEBE	BANRE	4 NM Holding Pattern	
		CETAX 1.9 NM to RWY31	3600	138°	4000
		RWY31	2540	318°	3600
		1.9	3.3 NM	7.1 NM	
CATEGORY	A	B	C	D	
LPV DA	2150-1 250 (300-1)		NA		
LNAV/VNAV DA	2150-1 250 (300-1)		NA		
LNAV MDA	2200-1 300 (300-1)		NA		
CIRCLING	2280-1 373 (400-1)	2360-1 453 (500-1)	2380-1½ 473 (500-1½)	NA	

NC-2, 11 JUN 2026 to 09 JUL 2026