

WAAS CH 58224 W18A	APP CRS 182°	Rwy Ldg TDZE Apt Elev	8498 23 23
--	------------------------	-----------------------------	---------------------------------------

RNAV (GPS) RWY 18

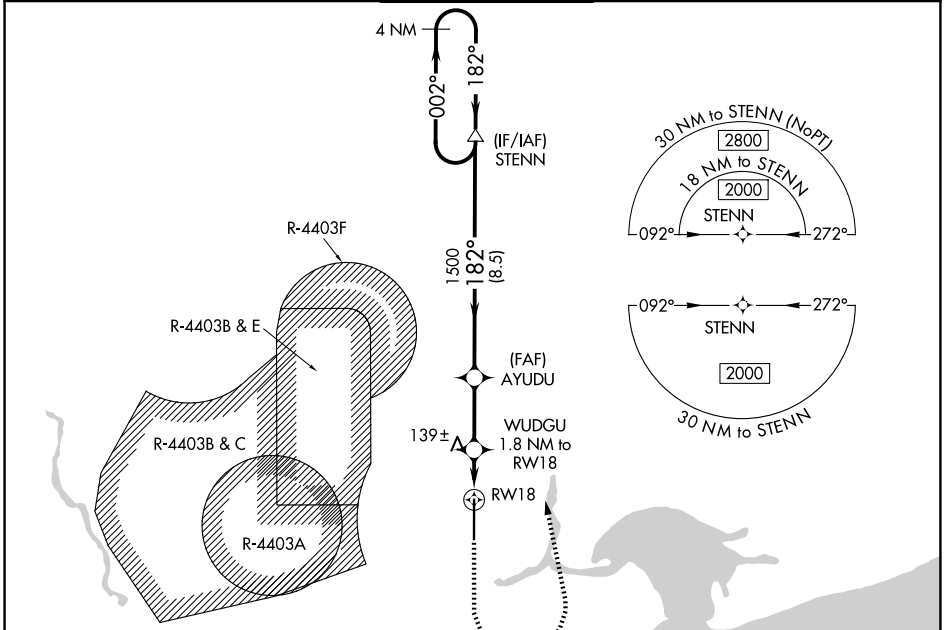
STENNIS INTL (HSA)

For uncompensated Baro-VNAV systems, LNAV/VNAV NA below -15°C (5°F) or above 54°C (130°F). Circling NA for Cat E west of Rwy 18-36. Baro-VNAV and VDP NA when using Gulfport altimeter setting. DME/DME RNP-0.3 NA. When local altimeter setting not received, use Gulfport altimeter setting: increase LPV DA to 247 feet; increase LNAV/VNAV DA to 373 feet; increase all MDA 60 feet and LNAV Cats C/D/E visibility 1/8 mile, and Circling Cats D/E visibility 1/4 mile. For inop MALSRL, increase LNAV Cats C/D/E visibility to 1 mile. For inop MALSRL when using Gulfport altimeter setting, increase LNAV Cat E visibility to 1 1/4 mile.



MISSED APPROACH:
Climb to 1400, then climbing left turn to 2000 direct STENN and hold.

AWOS-3PT 118.375	GULFPORT APP CON* 124.6 354.1 (130°-309°) 127.5 254.25 (310°-129°)	STENNIS TOWER* 127.15 (CTAF) 229.4	GND CON 121.725 229.4	UNICOM 122.95
----------------------------	--	---	---------------------------------	-------------------------



SC-4, 11 JUN 2026 to 09 JUL 2026

SC-4, 11 JUN 2026 to 09 JUL 2026

ELEV 23		D TDZE 23	
4 NM Holding Pattern		VGSI and RNAV glidepath not coincident (VGSI Angle 3.00/TCH 56).	
2000 ← 002° → 182° → 1500		AYUDU 1500 WUDGU 1.8 NM to RW18 *1 NM to RW18 RW18	
GP 3.00° TCH 56		* LNAV only.	
8.5 NM		2.7 NM 0.8 NM 1 NM	
CATEGORY	A	B	C
LPV DA		223-1/2	200 (200-1/2)
LNAV/VNAV DA		326-1/2	303 (400-1/2)
LNAV MDA	400-1/2	377 (400-1/2)	400-5/8 377 (400-5/8)
CIRCLING	480-1 457 (500-1)	520-1 1/2 497 (500-1 1/2)	820-2 1/2 797 (800-2 1/2) 820-2 3/4 797 (800-2 3/4)
REIL Rwys 36 1		HIRL Rwy 18-36 1	

