

WAAS CH 72806 W18A	APP CRS 176°	Rwy Ldg TDZE Apt Elev	6500 414 425
---------------------------------	------------------------	-----------------------------	---

RNAV (GPS) RWY 18

ROSCOE TURNER (CRX)

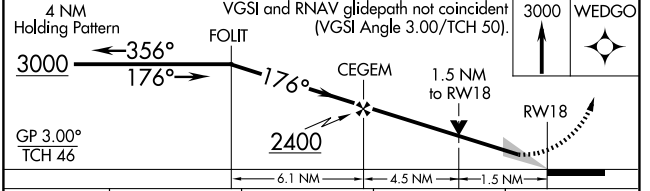
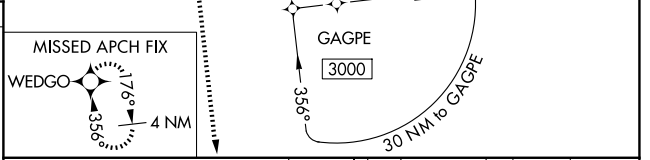
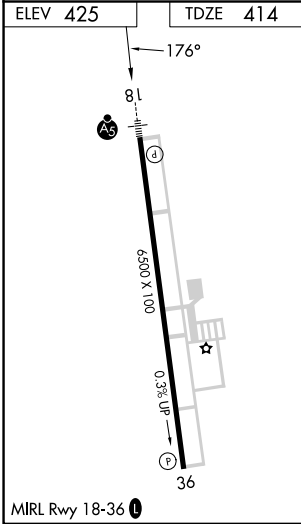
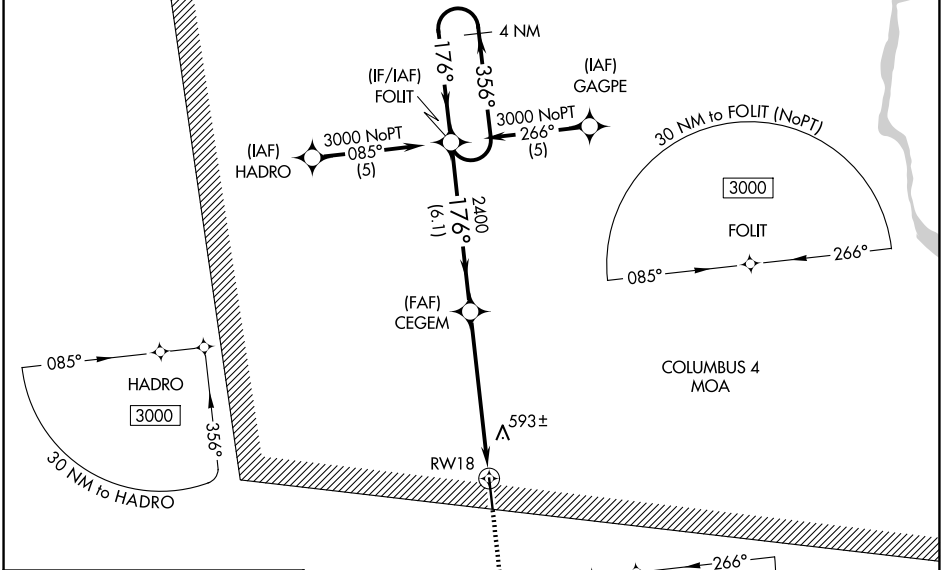
RNP APCH-GPS.

Baro-VNAV NA when using Selmer altimeter setting. For uncompensated Baro-VNAV systems, LNAV/VNAV NA below -15°C or above 54°C. VDP NA when using Selmer altimeter setting. When local altimeter setting not received, use Selmer altimeter setting and increase LPV DA to 682 feet, increase LNAV/VNAV DA to 812 feet and all visibilities ½ SM; increase all MDAs 80 feet and LNAV visibility Cats C and D ¾ SM and Circling visibility Cats C and D 1½ SM. For inop ALS when using Selmer altimeter setting, increase LPV all Cats visibility to ¾ SM and LNAV visibility Cats C and D to 1½ SM.

MALSRL

MISSED APPROACH:
Climb to 3000 direct WEDGO and hold.

AWOS-3PT 118.675	MEMPHIS CENTER 135.9 273.55	UNICOM 122.8 (CTAF) 0
----------------------------	---------------------------------------	---------------------------------



CATEGORY	A	B	C	D
LPV DA		614-½	200 (200-½)	
LNAV/VNAV DA		744-½	330 (400-½)	
LNAV MDA	940-½	526 (600-½)	940-1	526 (600-1)
CIRCLING	940-1	515 (600-1)	1100-2 675 (700-2)	1160-2¼ 735 (800-2¼)

SC-4, 11 JUN 2026 to 09 JUL 2026

SC-4, 11 JUN 2026 to 09 JUL 2026