

WAAS CH 48832 W36A	APP CRS 356°	Rwy Ldg TDZE Apt Elev	6500 425 425
--	------------------------	-----------------------------	---

RNAV (GPS) RWY 36

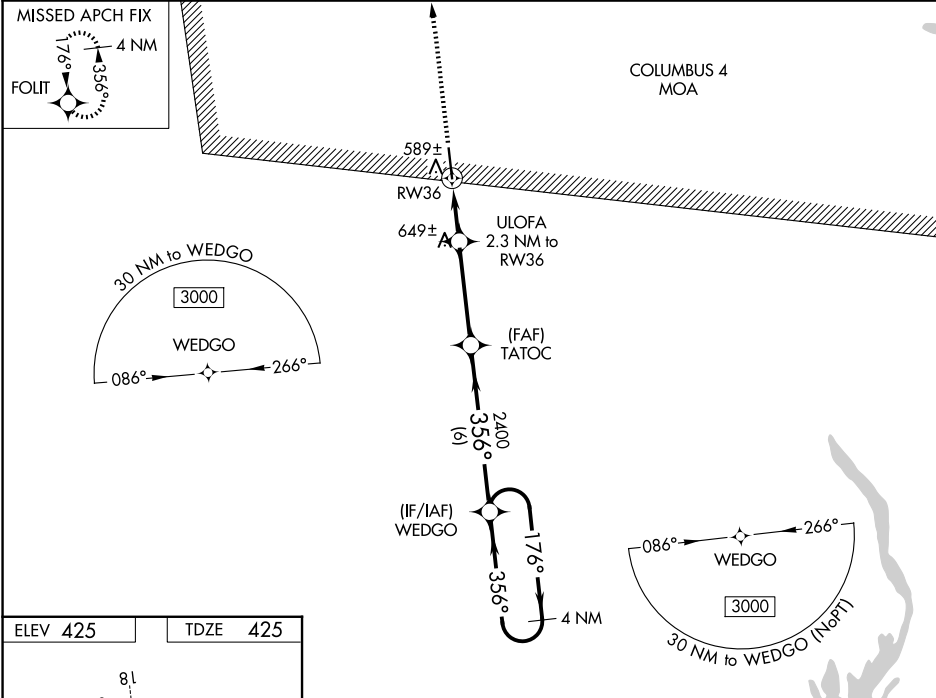
ROSCOE TURNER (CRX)

RNP APCH-GPS

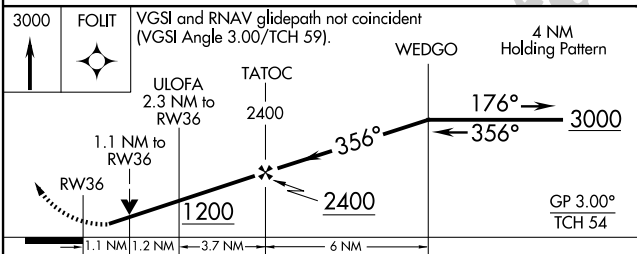
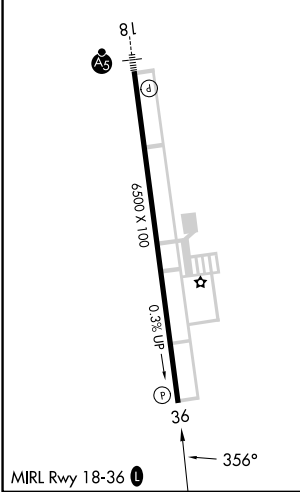
▼ For uncompensated Baro-VNAV systems, LNAV/VNAV NA below -15°C or above 54°C. When local altimeter setting not received, use Selmer altimeter setting and increase LPV DA to 764 feet and all visibilities ½ SM. Increase LNAV/VNAV DA to 818 feet and all visibilities ½ SM. Increase all MDAs 80 feet and LNAV visibility Cats C and D ¼ SM, and Circling visibility Cats C and D ½ SM. Baro-VNAV and VDP NA when using Selmer altimeter setting. Rwy 36 helicopter visibility reduction below ¾ SM NA.

MISSED APPROACH:
Climb to 3000 direct FOLIT and hold.

AWOS-3PT 118.675	MEMPHIS CENTER 135.9 273.55	UNICOM 122.8 (CTAF)
----------------------------	---------------------------------------	-------------------------------



ELEV 425	TDZE 425
----------	----------



CATEGORY	A	B	C	D
LPV DA		696-7/8	271 (300-7/8)	
LNAV/VNAV DA		750-1	325 (400-1)	
LNAV MDA	840-1	415 (500-1)	840-1 1/8	415 (500-1 1/8)
CIRCLING	920-1	495 (500-1)	1100-2 675 (700-2)	1160-2 1/4 735 (600-2 1/4)

SC-4, 11 JUN 2026 to 09 JUL 2026

SC-4, 11 JUN 2026 to 09 JUL 2026