

(DUMBR.HAREI1) 26078

HAREI ONE ARRIVAL (RNAV)

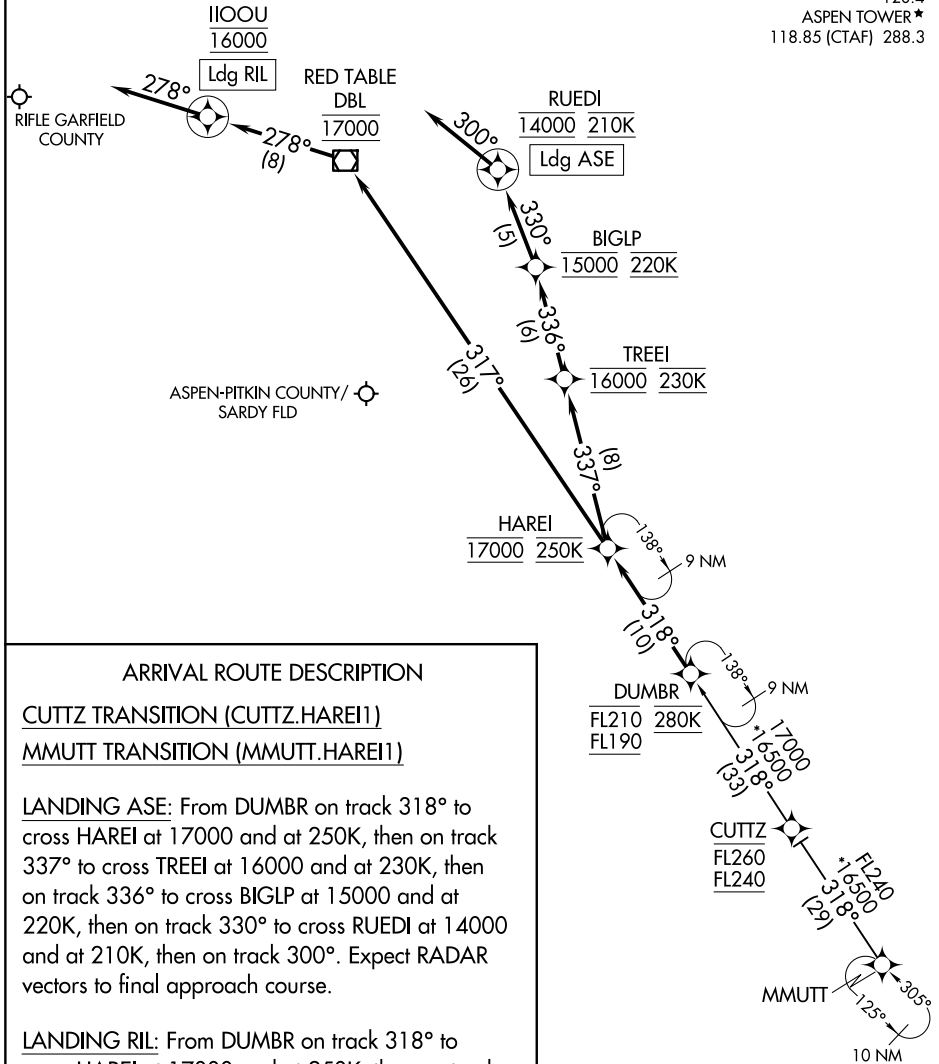
AL-5889 (FAA)

ASPEN, COLORADO

RNAV 1 - DME/DME/IRU or GPS.

RADAR required.

DENVER CENTER
 119.85 363.15
 ASPEN APP CON ★
 123.8 288.3
 ASE ATIS
 120.4
 ASPEN TOWER ★
 118.85 (CTAF) 288.3



ARRIVAL ROUTE DESCRIPTION

CUTTZ TRANSITION (CUTTZ.HAREI1)

MMUTT TRANSITION (MMUTT.HAREI1)

LANDING ASE: From DUMBR on track 318° to cross HAREI at 17000 and at 250K, then on track 337° to cross TREEI at 16000 and at 230K, then on track 336° to cross BIGLP at 15000 and at 220K, then on track 330° to cross RUEDI at 14000 and at 210K, then on track 300°. Expect RADAR vectors to final approach course.

LANDING RIL: From DUMBR on track 318° to cross HAREI at 17000 and at 250K, then on track 317° to cross DBL VOR/DME at 17000, then on track 278° to cross IIOOU at 16000, then on track 278°. Expect RADAR vectors to final approach course.

NOTE: Chart not to scale.

HAREI ONE ARRIVAL (RNAV)

(DUMBR.HAREI1) 17APR25

ASPEN, COLORADO

SW-1, 11 JUN 2026 to 09 JUL 2026

SW-1, 11 JUN 2026 to 09 JUL 2026