

MMARY ONE ARRIVAL (RNAV) Arrival Routes

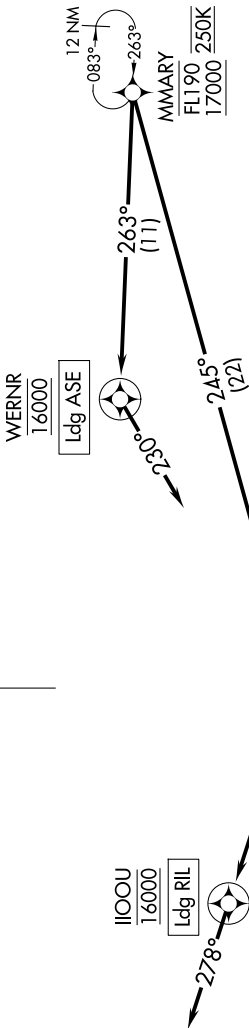
ASPEN, COLORADO

9200 UN 60 of 9200 UN 11 '1-MS

RNAV 1 - DME/DME/IRU or GPS.
RADAR required.

DENVER CENTER
128.65 282.2
ASPEN APP CON ★
123.8 288.3
ASE ATIS
120.4
ASPEN TOWER ★
118.85 (CTAF) 288.3

RIFLE GARFIELD COUNTY



ARRIVAL ROUTE DESCRIPTION

LANDING ASE: From MMARY on track 263° to cross WERNR at 16000, then on track 230°. Expect RADAR vectors to final approach course.

LANDING RIL: From MMARY on track 245° to cross DBL VOR/DME at 17000, then on track 278° to cross IIOOU at 16000, then on track 278°. Expect RADAR vectors to final approach course.

ASPEN PITKIN COUNTY/
SARDY FLD

NOTE: Chart not to scale.

MMARY ONE ARRIVAL (RNAV) Arrival Routes

ASPEN, COLORADO