

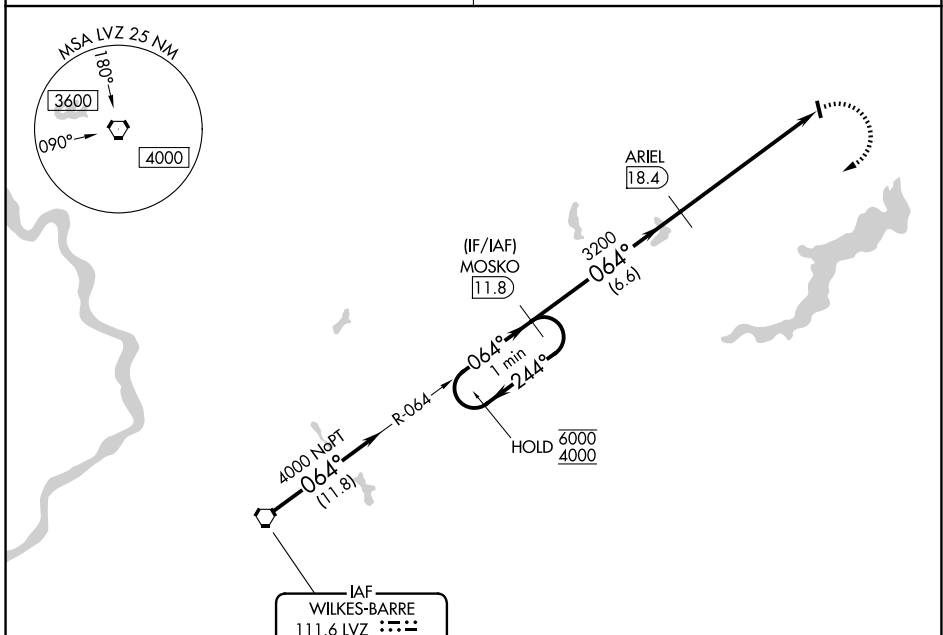
VORTAC LVZ 111.6 Chan 53	APP CRS 064°	Rwy Ldg TDZE Apt Elev	N/A N/A 1357
--	------------------------	-----------------------------	---

VOR-A
CHERRY RIDGE (N30)

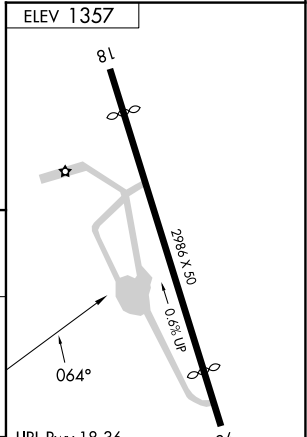
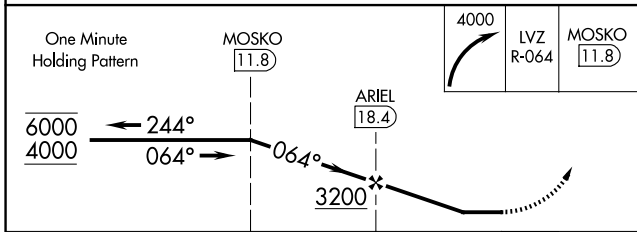
DME required.	MISSED APPROACH: Climbing right turn to 4000 on LVZ VORTAC R-064 to MOSKO 11.8 DME and hold.
<p>▼ Procedure NA at night. Helicopter visibility reduction below 1 SM NA.</p> <p>▲ NA Obtain local altimeter setting on CTAF; when not received, use Wilkes-Barre/Scranton altimeter setting and increase all MDAs 120 feet.</p>	

WILKES-BARRE APP CON
120.95 256.7

UNICOM
122.8 (CTAF)



Procedure NA for arrival on LVZ VORTAC airway radials 047 CW 094.



CATEGORY	A	B	C	D	FAF to MAP 6.1 NM					
CIRCLING	2180-1¼ 823 (900-1¼)		NA		Knots	60	90	120	150	180
					Min:Sec	6:06	4:04	3:03	2:26	2:02

NE-4, 11 JUN 2026 to 09 JUL 2026

NE-4, 11 JUN 2026 to 09 JUL 2026