

WAAS CH 77837 W19A	APP CRS 188°	Rwly Ldg TDZE Apt Elev	4501 67 67
--	------------------------	------------------------------	---------------------------------------

RNAV (GPS) RWY 19

TRI-COUNTY AT HENRY JOYNER FLD (ASJ)

RNP APCH - GPS.

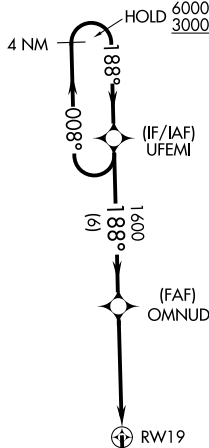
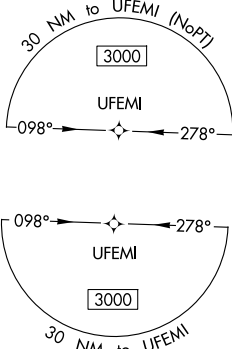
⚠ Circling Rwy 1 NA at night. For uncompensated Baro-VNAV systems, LNAV/VNAV NA below -15°C or above 54°C. Rwy 19 helicopter visibility reduction below ¼ SM NA.
 ⚠ Baro-VNAV and VDP NA when using FKN altimeter setting. When local altimeter setting not received, use FKN altimeter setting and increase LPV DA to 434 feet; increase LNAV/VNAV DA to 515 feet and all visibilities ¾ SM. Increase all MDAs 80 feet and LNAV visibility Cat C/D ¼ SM, and Circling visibility Cat C/D ¼ SM.

MISSED APPROACH: Climb to 3000 direct ILTOJ and hold, continue climb-in-hold to 3000.

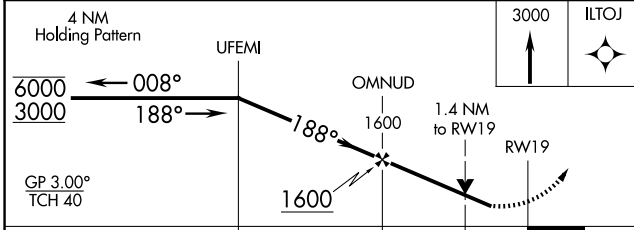
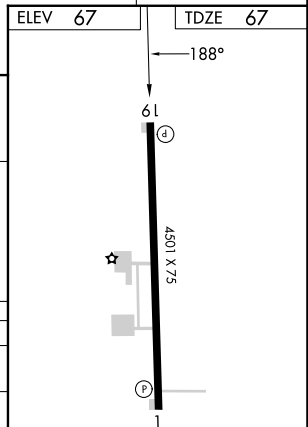
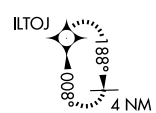
AWOS-3
119.075

WASHINGTON CENTER
123.85 279.65

UNICOM
122.8 (CTAF) 0



MISSED APCH FIX



CATEGORY	A	B	C	D
LPV DA		365-1	298 (300-1)	
LNAV/VNAV DA		446-1	379 (400-1)	
LNAV MDA	540-1	473 (500-1)	540-1 3/8	473 (500-1 3/8)
CIRCLING	540-1	473 (500-1)	540-1 1/2	820-2 1/2
			473 (500-1 1/2)	753 (800-2 1/2)

MIRL Rwy 1-19 0
REIL Rwy 1 and 19 0

SE-2, 11 JUN 2026 to 09 JUL 2026

SE-2, 11 JUN 2026 to 09 JUL 2026