

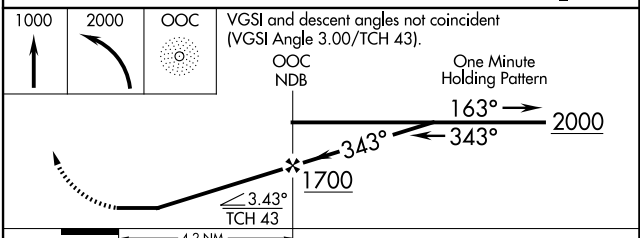
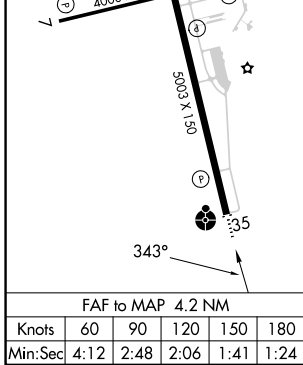
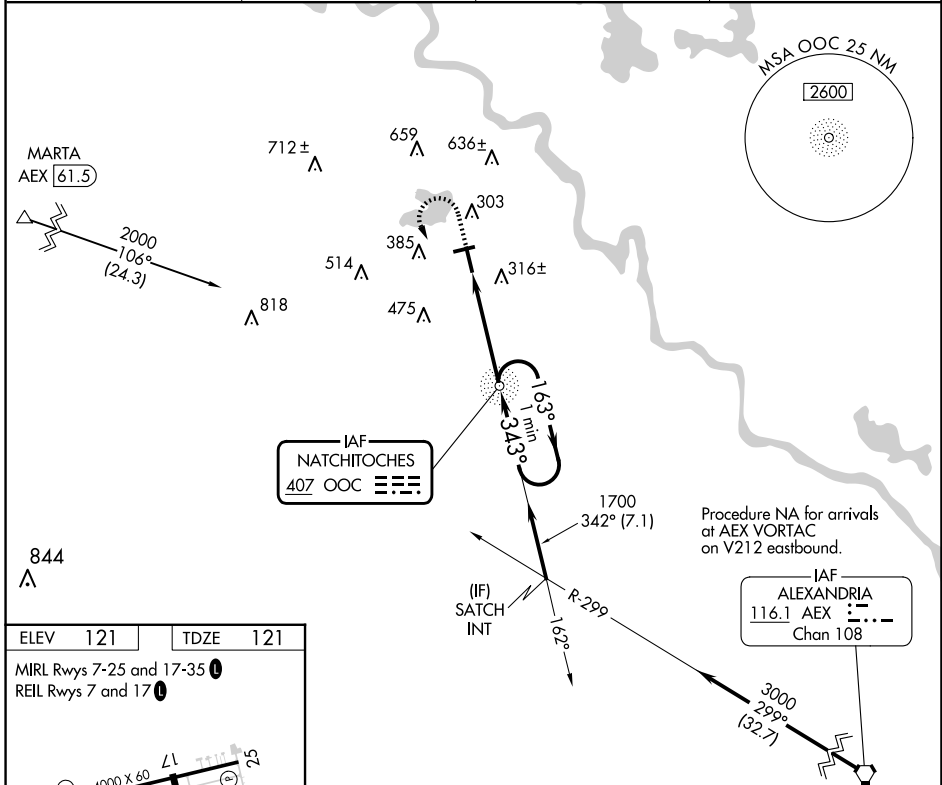
NDB OOC <b>407</b>	APP CRS <b>343°</b>	Rwy Idg <b>5003</b>
		TDZE <b>121</b>
		Apt Elev <b>121</b>

**NDB RWY 35**  
NATCHITOCHE RGNL (I.E.R)

**▼** Helicopter visibility reduction below 3/4 SM NA. When local altimeter setting not received, use Alexandria Intl altimeter setting: Increase all MDA 100 feet and S-35 Cat C visibility 1/8 SM and Circling Cat C visibility 1/2 SM. For inoperative ODALS increase S-35 Cat C visibility 1/8 mile. Inoperative table does not apply to S-35 Cat A/B.

**▲NA** **ODALS** MISSED APPROACH: Climb to 1000 then climbing left turn to 2000 direct OOC NDB and hold.

AWOS-3 <b>119,025</b>	POLK APP CON <b>125.4 302.2</b>	GCO <b>135,075</b>	UNICOM <b>122.8(CTAF) 0</b>
--------------------------	------------------------------------	-----------------------	--------------------------------



CATEGORY	A	B	C	D
S-35	720-1	599 (600-1)	720-1 1/2 599 (600-1 1/2)	NA
CIRCLING	720-1 599 (600-1)	740-1 619 (700-1)	860-2 739 (800-2)	NA

SC-4, 11 JUN 2026 to 09 JUL 2026

SC-4, 11 JUN 2026 to 09 JUL 2026