

WAAS CH <b>40145</b> <b>W32A</b>	APP CRS <b>315°</b>	Rwy Ldg TDZE Apt Elev	<b>4000</b> <b>1392</b> <b>1402</b>
--	------------------------	-----------------------------	---

# RNAV (GPS) RWY 32

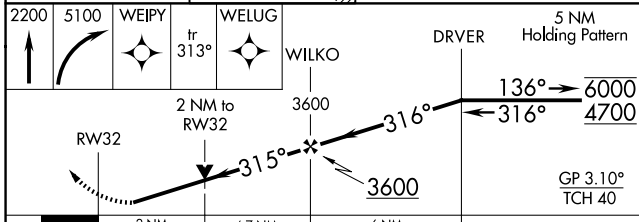
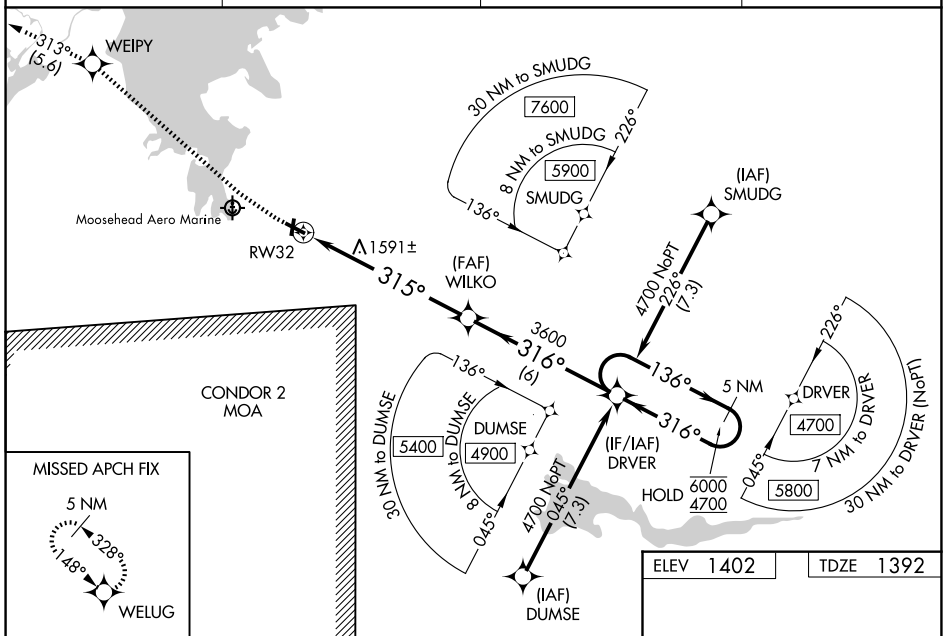
GREENVILLE MUNI (3B1)

RNP APCH - GPS.

**NA** Rwy 32 helicopter visibility reduction below 3/4 SM NA. Circling Rwy 3, 21 NA at night. Baro-VNAV NA. VDP NA when using BGR altimeter setting. When local altimeter not received, use BGR altimeter setting: increase LPV DA to 1952 feet and all visibilities 3/8 SM, increase LNAV/VNAV DA to 2145 feet and all visibilities 5/8 SM; increase all MDAs 300 feet and LNAV all visibilities 1 1/8 SM, and Circling visibility Cat A/B 1/4 SM. Circling NA northeast of Rwy 14-32.

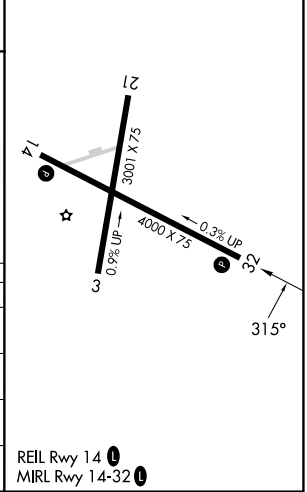
**MISSED APPROACH:** Climb to 2200 then climbing right turn to 5100 direct WEIPY and on track 313° to WELUG and hold, continue climb-in-hold to 5100.

AWOS-A <b>124.175</b>	BOSTON CENTER <b>120.25 346.4</b>	CLNC DEL <b>122.3</b>	UNICOM <b>122.8</b> (CTAF) <b>U</b>
--------------------------	--------------------------------------	--------------------------	--



ELEV 1402	TDZE 1392
-----------	-----------

CATEGORY	A	B	C	D
LPV DA	1667-1		275 (300-1)	
LNAV/VNAV DA	1860-13/8		468 (500-13/8)	
LNAV MDA	2060-1	668 (700-1)	2060-17/8	668 (700-17/8)
CIRCLING	2060-1 658 (700-1)	2300-1 1/4 898 (900-1 1/4)	2440-3 1038 (1100-3)	2660-3 1258 (1300-3)



NE-1, 11 JUN 2026 to 09 JUL 2026

NE-1, 11 JUN 2026 to 09 JUL 2026