

GARLAND SIX DEPARTURE

SC-2, 11 JUN 2026 to 09 JUL 2026

TOP ALTITUDE: ASSIGNED BY ATC

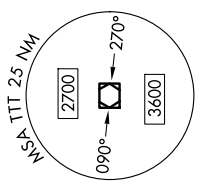
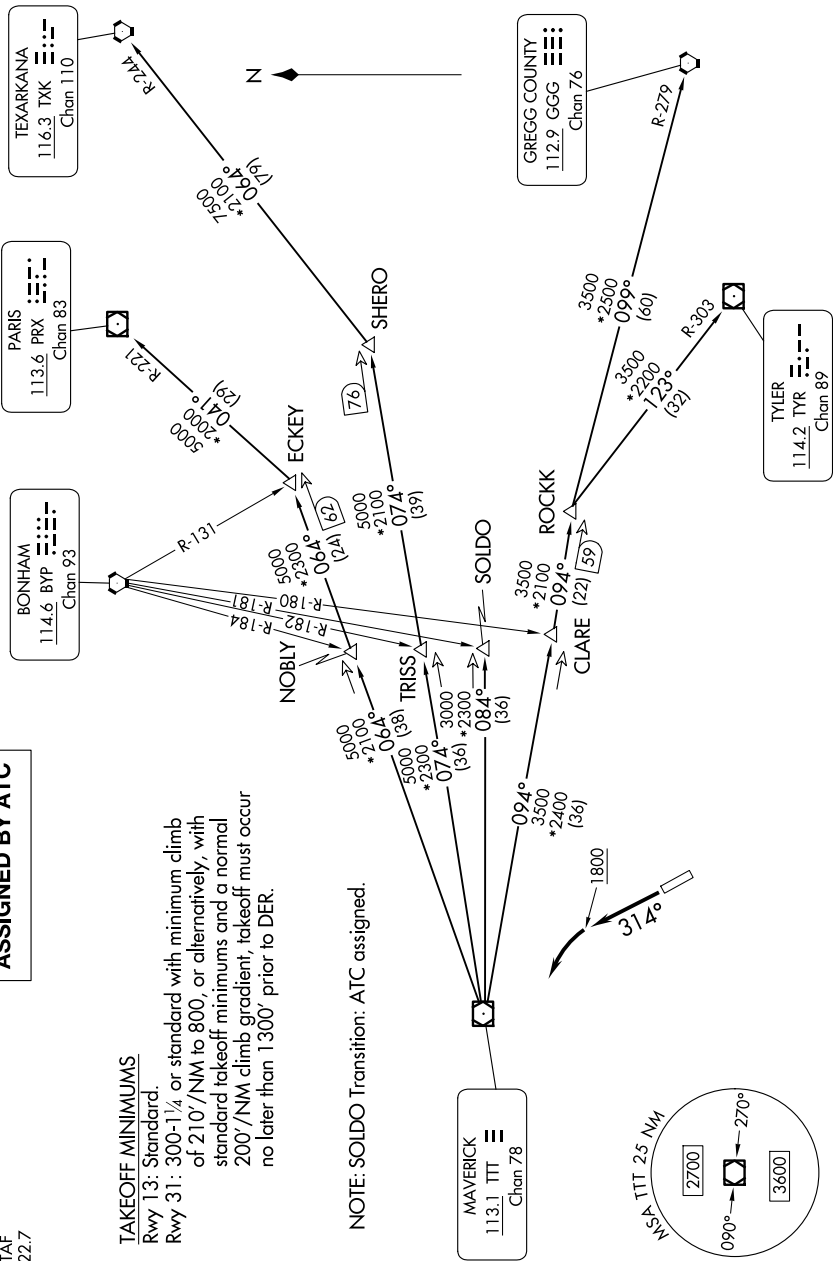
LONE STAR DEP CON
125.2 343.65
CTAF
122.7

TAKEOFF MINIMUMS

Rwy 13: Standard.
Rwy 31: 300-1 $\frac{1}{2}$ or standard with minimum climb of 210'/NM to 800, or alternatively, with standard takeoff minimums and a normal 200'/NM climb gradient, takeoff must occur no later than 1300' prior to DER.

NOTE: SOLDO Transition: ATC assigned.

RADAR and DME required.



NOTE: Chart not to scale.

(CONTINUED ON FOLLOWING PAGE)