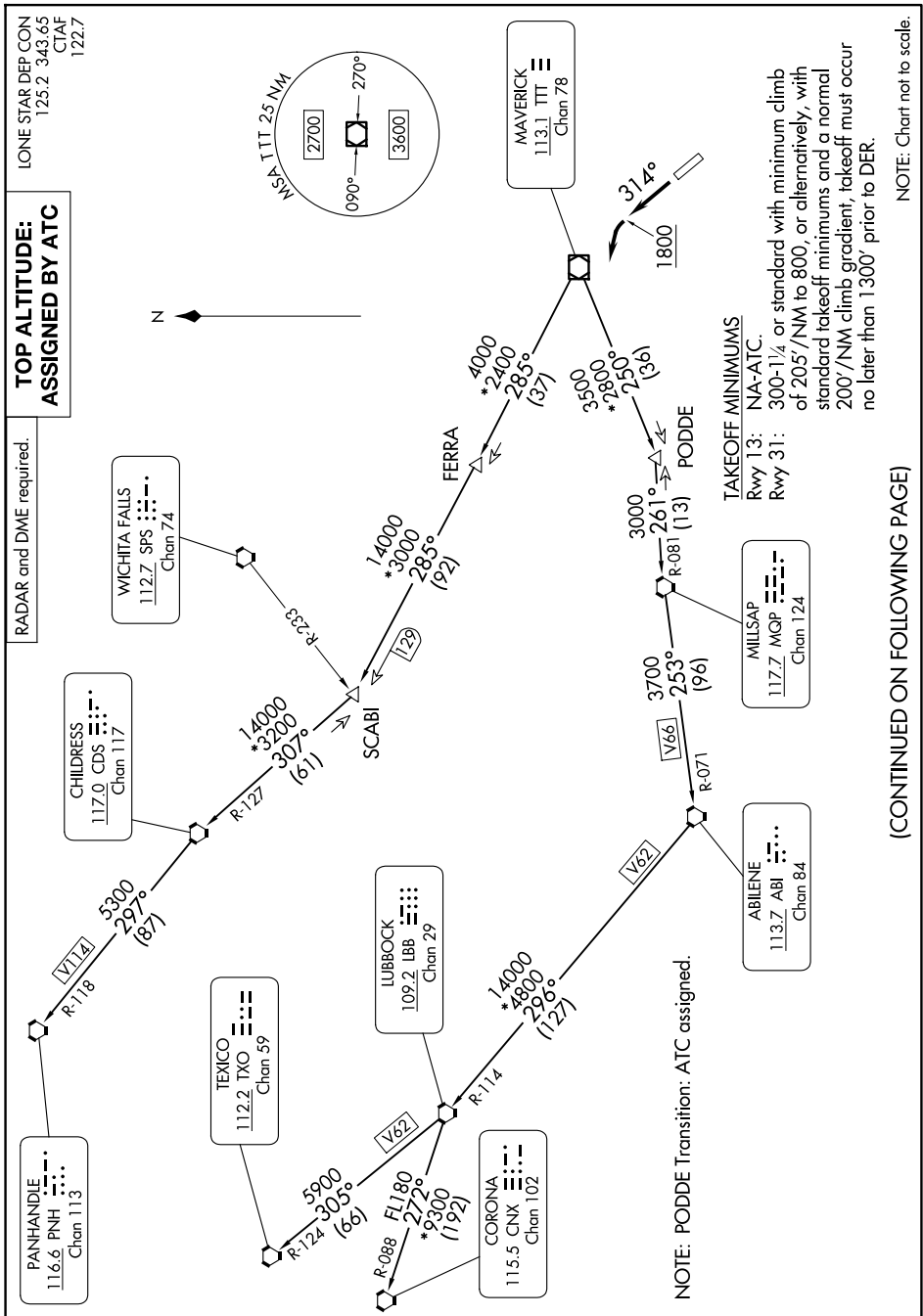


WORTH ONE DEPARTURE

SC-2, 11 JUN 2026 to 09 JUL 2026



**TOP ALTITUDE:
ASSIGNED BY ATC**

RADAR and DME required.

LONE STAR DEP CON
125.2 343.65
CTAF
122.7

TAKEOFF MINIMUMS
Rwy 13: NA-ATC.
300-1/4 or standard with minimum climb
of 205'/NM to 800', or alternatively, with
standard takeoff minimums and a normal
200'/NM climb gradient, takeoff must occur
no later than 1300' prior to DER.

MILLSAP
117.2 MOP
Chan 124

ABILENE
113.7 ABI
Chan 84

NOTE: PODDE Transition: ATC assigned.

(CONTINUED ON FOLLOWING PAGE)

NOTE: Chart not to scale.

WORTH ONE DEPARTURE

SC-2, 11 JUN 2026 to 09 JUL 2026