

|             |          |             |
|-------------|----------|-------------|
| APP CRS     | Rwy Ldg  | <b>3907</b> |
| <b>359°</b> | TDZE     | <b>512</b>  |
|             | Apt Elev | <b>516</b>  |

# RNAV (GPS) RWY 36

COMMERCE MUNI (2F7)

RNP APCH.

▼ Use Greenville altimeter setting, when not received, use Sulphur Springs altimeter setting and increase all MDAs 20 feet. Rwy 36 helicopter visibility reduction below 3/4 SM NA.

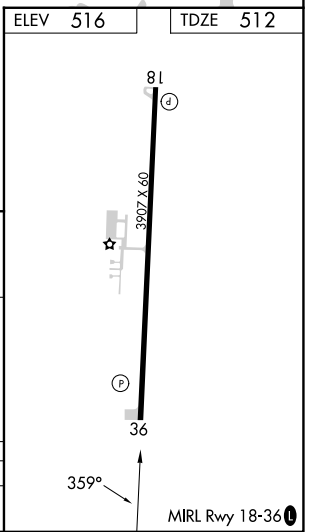
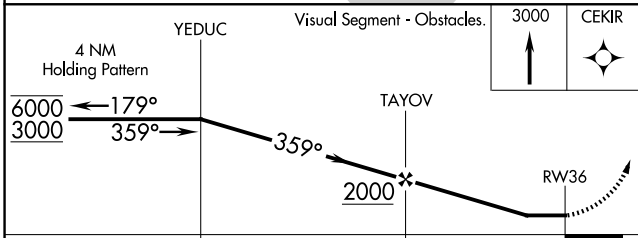
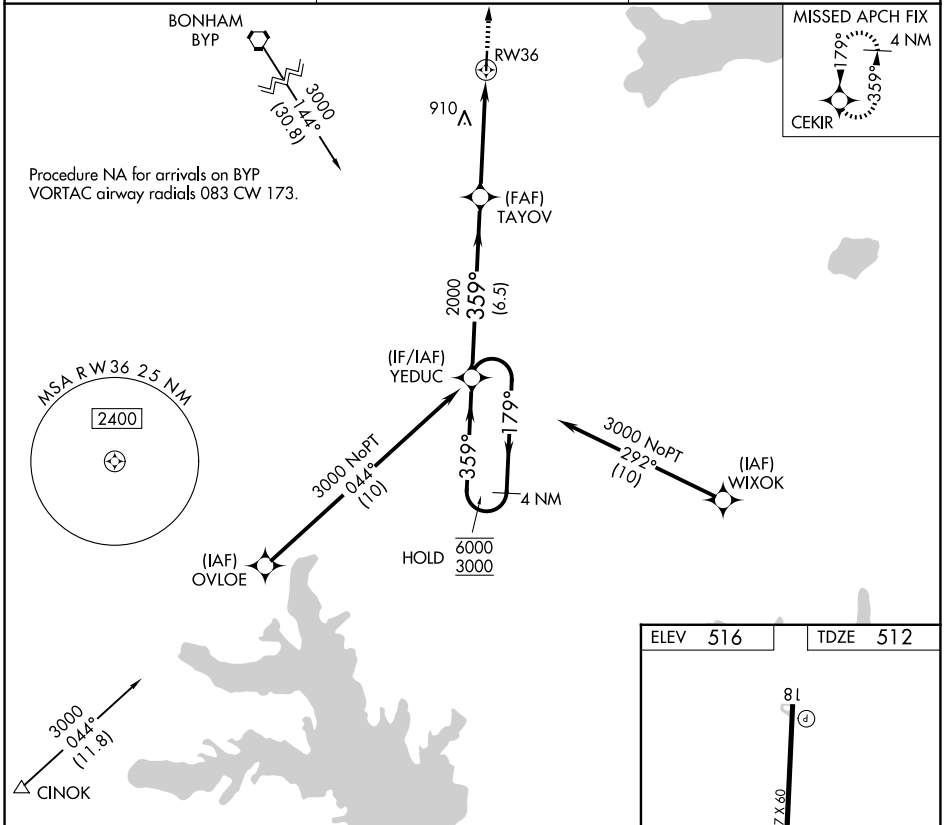
▲ NA

MISSED APPROACH: Climb to 3000 direct CEKIR and hold.

GVT AWOS-3  
**133.425**

FORT WORTH CENTER  
**132.025 317.75**

CTAF  
**122.9**



|          |        |             |    |   |
|----------|--------|-------------|----|---|
| CATEGORY | A      | B           | C  | D |
| LNAV MDA | 1140-1 | 628 (700-1) | NA |   |

SC-2, 11 JUN 2026 to 09 JUL 2026

SC-2, 11 JUN 2026 to 09 JUL 2026