

| | | | |
|-------------------------|------------------------|-----------------------------|---|
| VOR CGG 109.8 | APP CRS 128° | Rwy Ldg TDZE Apt Elev | 5005 1154 1158 |
|-------------------------|------------------------|-----------------------------|---|

VOR RWY 14

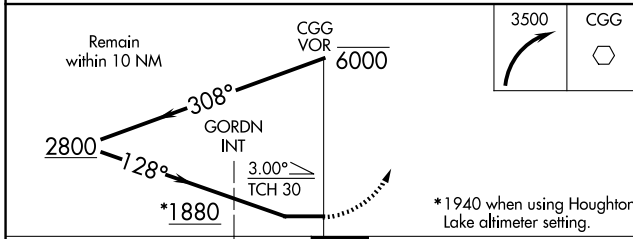
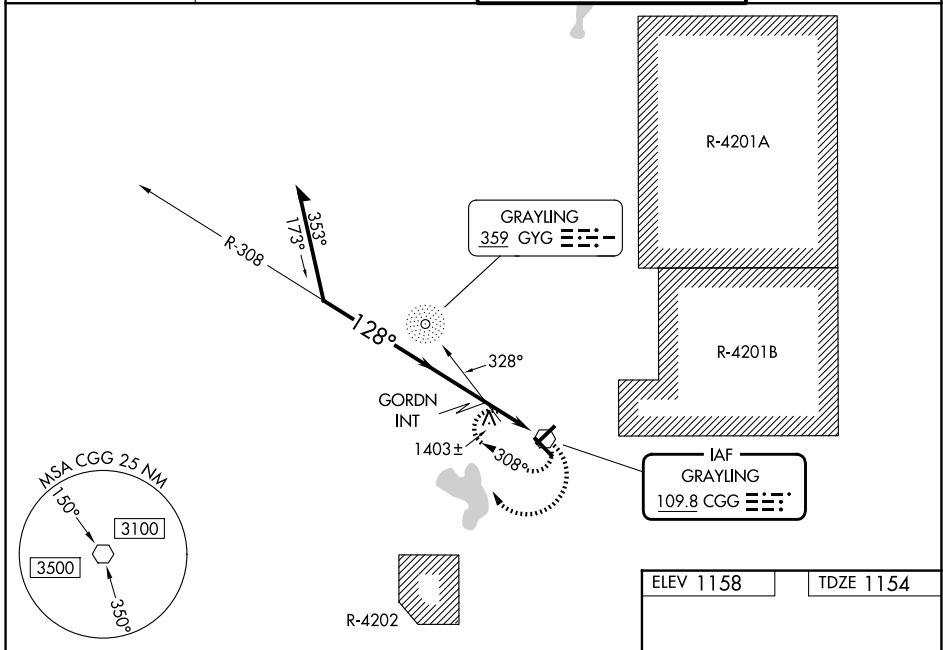
GRAYLING AAF (GOV)

RADAR required for procedure entry.

NA Circling Rwy 5, 23, 32 NA at night. Rwy 14 helicopter visibility reduction below 3/4 SM NA. When local altimeter setting not received, use Houghton Lake altimeter setting: increase all MDAs 60 feet and S-14 visibility Cat B 1/4 SM, Cats C and D 1/2 SM and Circling Cat B 1/4 SM, Cat C 1/2 SM, Cat D 1/4 SM and GORDN fix minimums: S-14 Cats C and D 1/4 SM and Circling Cat C and D visibility 1/4 SM.

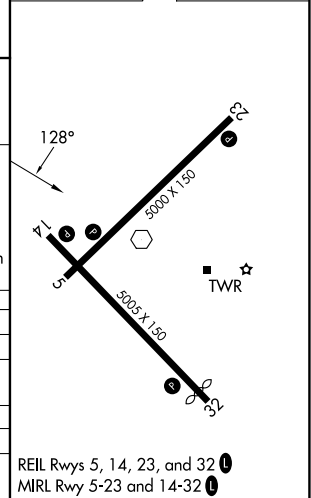
MISSED APPROACH: Climbing right turn to 3500 in CGG VOR holding pattern.

| | | | |
|------------------------|---|--|-------------------------|
| ATIS 119.075 | MINNEAPOLIS CENTER 125.475 269.45 | GRAYLING TOWER ★ 124.65 (CTAF) 0 | GND CON 121.9 |
|------------------------|---|--|-------------------------|



| | |
|-----------|-----------|
| ELEV 1158 | TDZE 1154 |
|-----------|-----------|

| CATEGORY | A | B | C | D |
|-----------------------------------|-----------------------|-----------------------|-------------------------------|-------------------------------|
| S-14 | 1880-1 | 726 (800-1) | 1880-2 | 726 (800-2) |
| CIRCLING | 1880-1 | 722 (800-1) | 1880-2 722 (800-2) | 1960-2 1/2 802 (900-2 1/2) |
| GORDN FIX MINIMUMS (ADF REQUIRED) | | | | |
| S-14 | 1660-1 | 506 (600-1) | 1660-1 3/8 | 506 (600-1 3/8) |
| CIRCLING | 1660-1 502 (600-1) | 1720-1 562 (600-1) | 1800-1 3/4 642 (700-1 3/4) | 1960-2 1/2 802 (900-2 1/2) |



REIL Rwys 5, 14, 23, and 32 0
MIRL Rwy 5-23 and 14-32 0

EC-1, 11 JUN 2026 to 09 JUL 2026

EC-1, 11 JUN 2026 to 09 JUL 2026