

VENICE, FLORIDA

AL-5960 (FAA)

26078

WAAS CH 53433 W23A	APP CRS 230°	Rwy Ldg 4377 TDZE 18 Apt Elev 18
----------------------------------------	------------------------	-------------------------------------------------------------

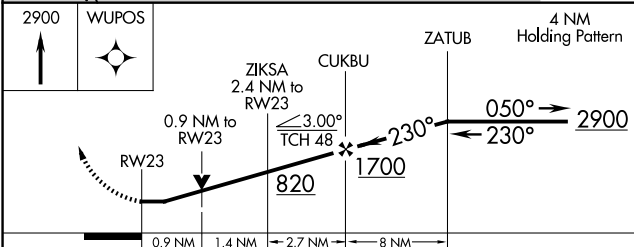
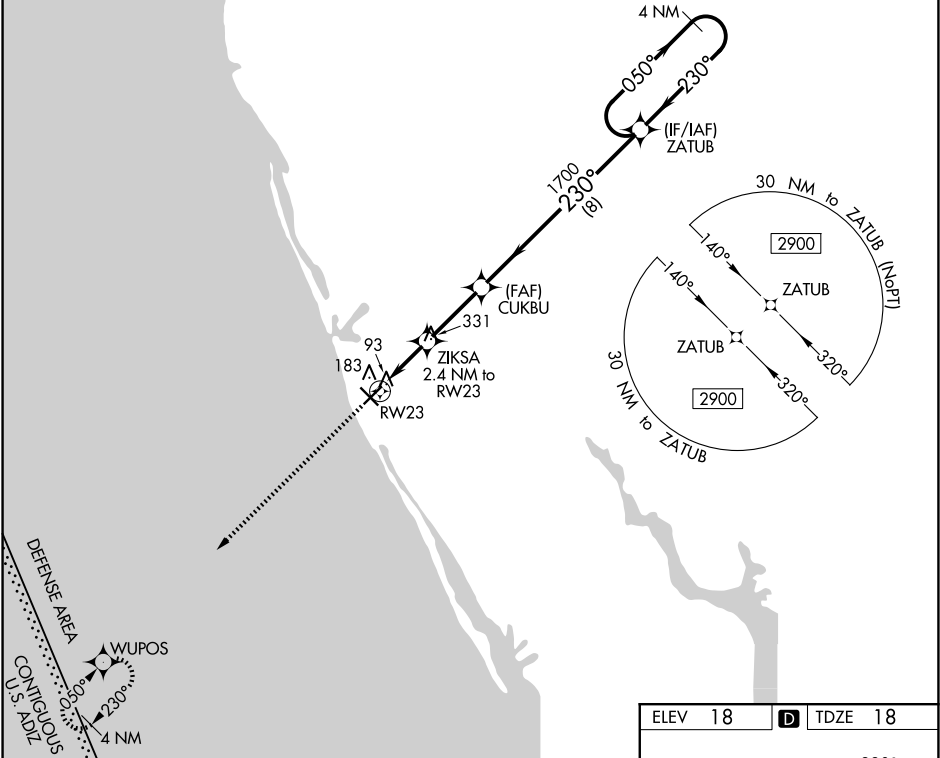
RNAV (GPS) RWY 23

VENICE MUNI (VNC)

⚠ When local altimeter setting not received, use Sarasota altimeter setting and increase all MDA 60 feet and increase LP and LNAV Cats C, D visibility $\frac{1}{8}$ mile, and Circling Cat C visibility $\frac{1}{4}$ mile. DME/DME RNP-0.3 NA. VDP NA with Sarasota altimeter setting. Helicopter visibility reduction below $\frac{3}{4}$ SM NA.

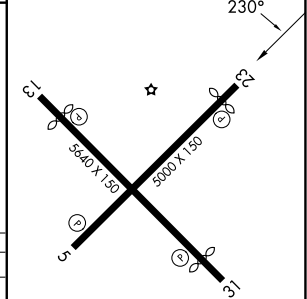
MISSED APPROACH:
Climb to 2900 direct WUPOS and hold.

AWOS-3 119.275	TAMPA APP CON 119.65 353.575	UNICOM 122.725 (CTAF) ①
--------------------------	----------------------------------------	-----------------------------------



CATEGORY	A	B	C	D
LP MDA	360-1 342 (400-1)			
LNAV MDA	440-1	422 (500-1)	440-1 $\frac{1}{4}$	422 (500-1 $\frac{1}{4}$)
CIRCLING	500-1	482 (500-1)	700-2 682 (700-2)	920-3 902 (1000-3)

ELEV 18	D TDZE 18
---------	------------------



MIRL Rwy 5-23 and 13-31 ①
REIL Rwy 5, 13 and 23 ①
REIL Rwy 31

VENICE, FLORIDA
Orig-B 16OCT14

27°04'N-82°26'W

RNAV (GPS) RWY 23

VENICE MUNI (VNC)

SE-3, 11 JUN 2026 to 09 JUL 2026

SE-3, 11 JUN 2026 to 09 JUL 2026