

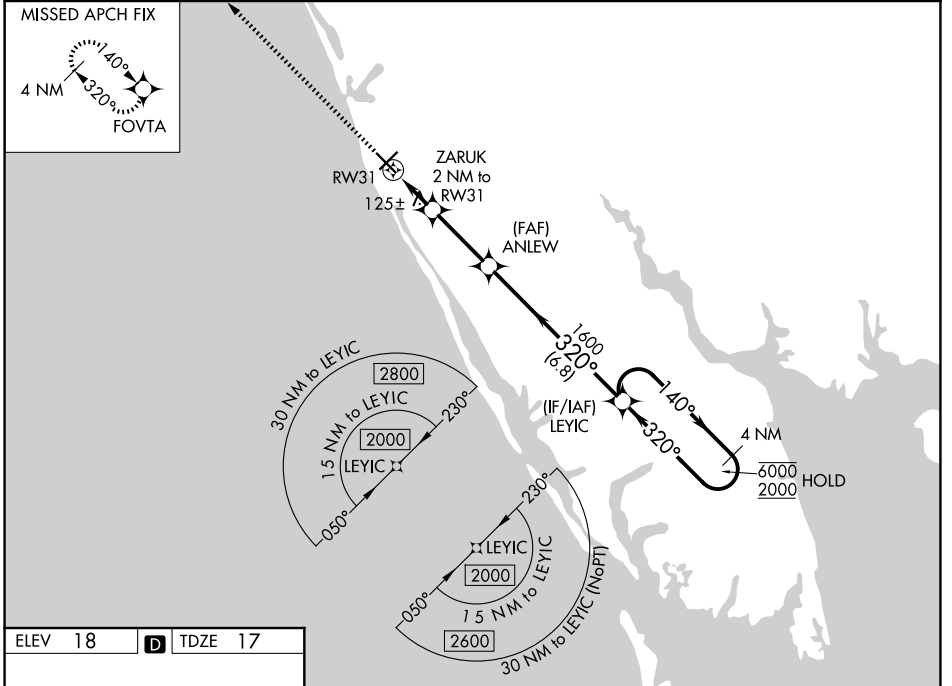
WAAS CH <b>78223</b> <b>W31A</b>	APP CRS <b>320°</b>	Rwy Ldg <b>5000</b> TDZE <b>17</b> Apt Elev <b>18</b>
--	------------------------	---

# RNAV (GPS) RWY 31

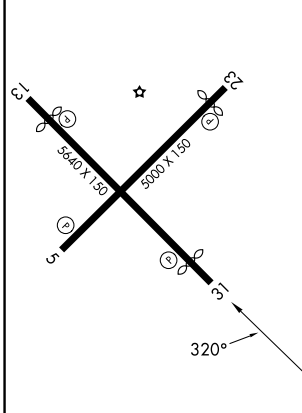
VENICE MUNI (VNC)

RNP APCH - GPS.	MISSED APPROACH: Climb to 2000 direct FOVTA and hold.
-----------------	---

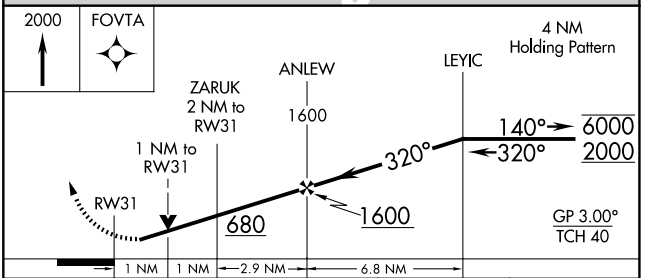
AWOS-3 <b>119.275</b>	TAMPA APP CON <b>119.65 353.575</b>	UNICOM <b>122.725 (CTAF) 1</b>
--------------------------	--	-----------------------------------



ELEV 18	<b>D</b>	TDZE 17
---------	----------	---------



MIRL Rwy 5-23 and 13-31 **1**  
REIL Rwy 5, 13 and 23 **1**  
REIL Rwy 31



CATEGORY	A	B	C	D
LPV DA		267-1	250 (300-1)	
LNAV/VNAV DA		296-1	279 (300-1)	
LNAV MDA		380-1	363 (400-1)	
CIRCLING	500-1	482 (500-1)	680-1 <sup>3</sup> / <sub>4</sub> 662 (700-1 <sup>3</sup> / <sub>4</sub> )	920-3 902 (1000-3)

SE-3, 11 JUN 2026 to 09 JUL 2026

SE-3, 11 JUN 2026 to 09 JUL 2026