

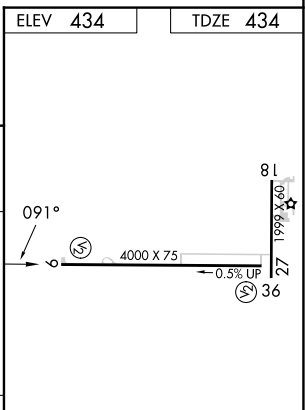
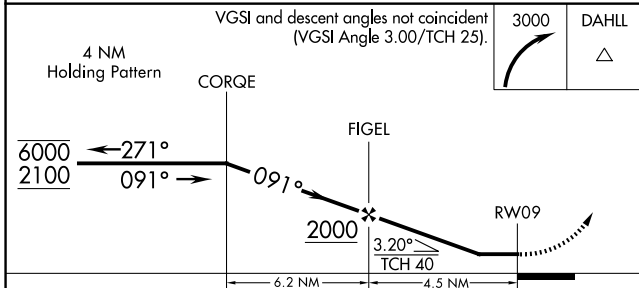
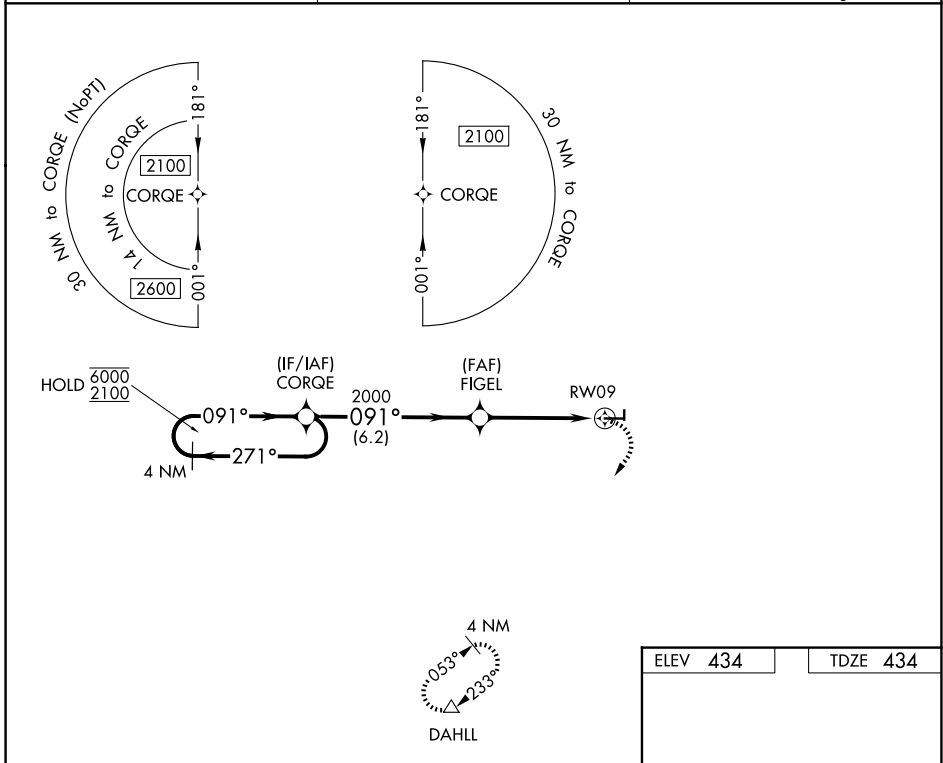
APP CRS	Rwy Ldg	4000
091°	TDZE	434
	Apt Elev	434

RNAV (GPS) RWY 9

FAIRFIELD MUNI (FWC)

RNP APCH.	MISSED APPROACH: Climbing right turn to 3000 direct DAHLL and hold.
▼ Rwy 9 helicopter visibility reduction below 1 SM NA. Straight-in Rwy 9 NA at night, Circling Rwy 9, 27, 36 NA at night.	

AWOS-3PT 119.425	KANSAS CITY CENTER 127.7 351.825	UNICOM 123.05 (CTAF) 0
----------------------------	--	----------------------------------



CATEGORY	A	B	C	D
RNAV MDA	880-1	446 (500-1)	880-1 $\frac{3}{8}$ 446 (500-1 $\frac{3}{8}$)	NA
CIRCLING	1040-1	606 (700-1)	1100-1 $\frac{3}{4}$ 666 (700-1 $\frac{3}{4}$)	NA

REIL Rwy 9 0
MIRL Rwy 9-27 and 18-36 0

EC-3, 11 JUN 2026 to 09 JUL 2026

EC-3, 11 JUN 2026 to 09 JUL 2026