

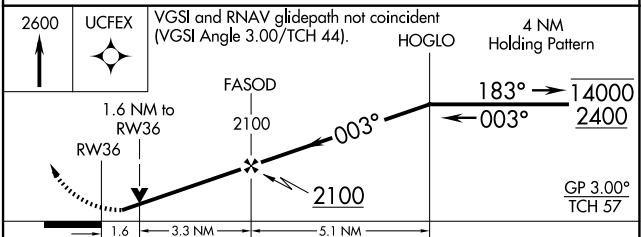
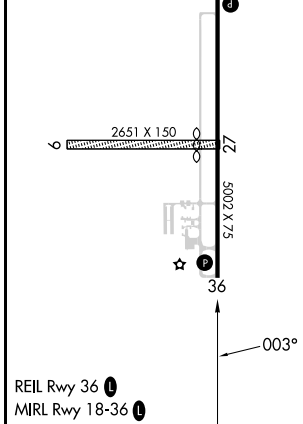
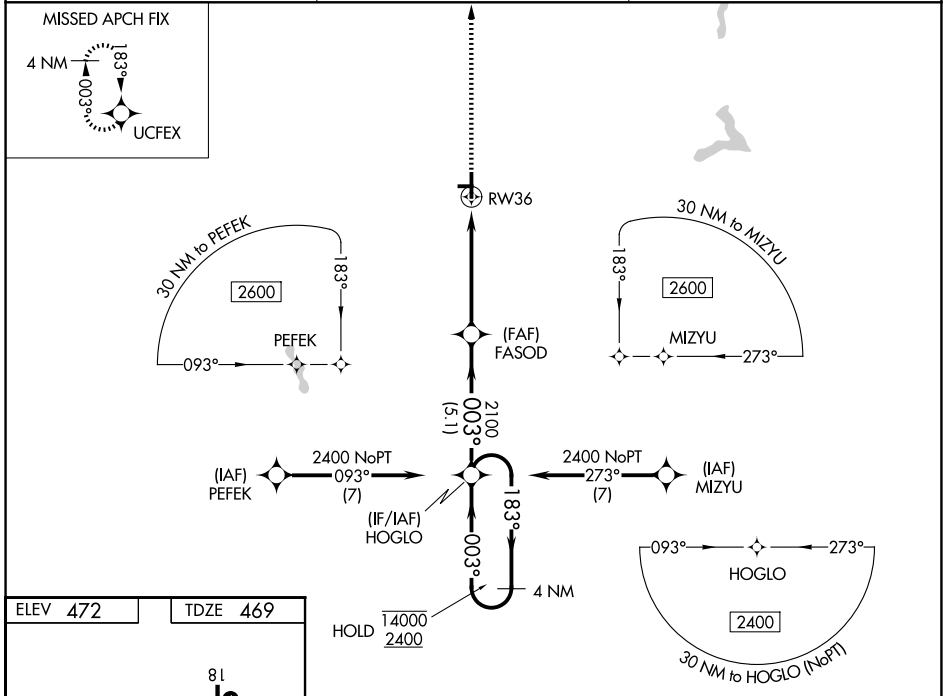
WAAS CH 45647 W36A	APP CRS 003°	Rwy Ldg TDZE 469 Apt Elev 472	5002
--	------------------------	---	-------------

RNAV (GPS) RWY 36

DAVISS COUNTY (DCY)

RNP APCH - GPS.	MISSED APPROACH: Climb to 2600 direct UCFEX and hold.
-----------------	---

AWOS-3PT 119.075	EVANSVILLE APP CON ★ 125.6 343.7	UNICOM 122.8 (CTAF) 0
----------------------------	--	--



CATEGORY	A	B	C	D
LPV DA	852-1 $\frac{1}{8}$ 383 (400-1 $\frac{1}{8}$)			
LNAV/VNAV DA	1020-1 $\frac{5}{8}$ 551 (600-1 $\frac{5}{8}$)			
LNAV MDA	1020-1	551 (600-1)	1020-1 $\frac{5}{8}$	551 (600-1 $\frac{5}{8}$)
CIRCLING	1040-1 568 (600-1)	1080-1 608 (700-1)	1080-1 $\frac{3}{4}$ 608 (700-1 $\frac{3}{4}$)	1300-2 $\frac{3}{4}$ 828 (900-2 $\frac{3}{4}$)

EC-2, 11 JUN 2026 to 09 JUL 2026

EC-2, 11 JUN 2026 to 09 JUL 2026