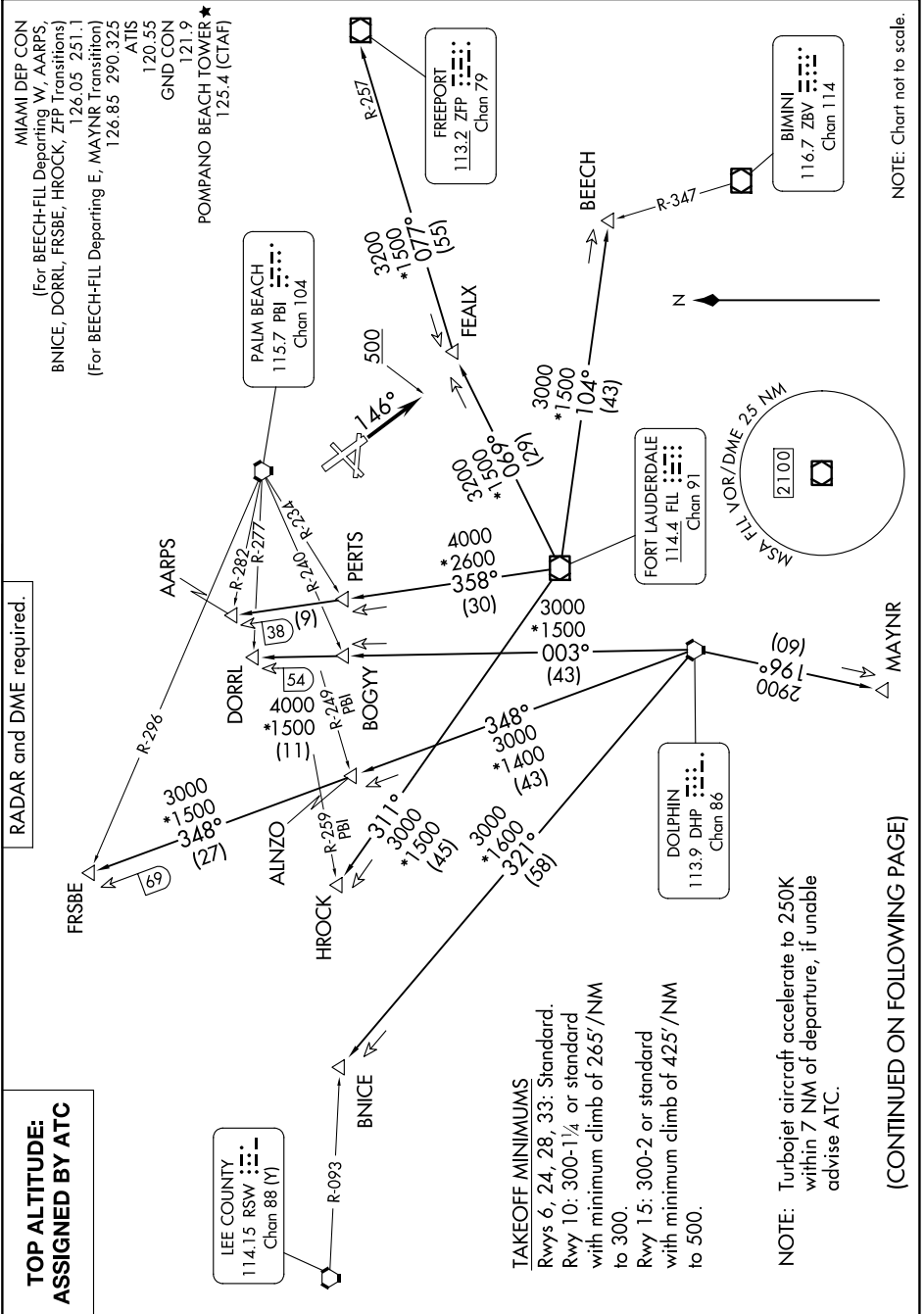


FORT LAUDERDALE TWO DEPARTURE

SE-3, 11 JUN 2026 to 09 JUL 2026



NOTE: Chart not to scale.

RADAR and DME required.

**TOP ALTITUDE:
ASSIGNED BY ATC**

LEE COUNTY
114.15 RSW
Chan 88 (V)

TAKEOFF MINIMUMS
 Rwys 6, 24, 28, 33: Standard.
 Rwy 10: 300-1¼ or standard
 with minimum climb of 265'/NM
 to 300.
 Rwy 15: 300-2 or standard
 with minimum climb of 425'/NM
 to 500.

NOTE: Turbojet aircraft accelerate to 250K
 within 7 NM of departure, if unable
 advise ATC.

(CONTINUED ON FOLLOWING PAGE)

SE-3, 11 JUN 2026 to 09 JUL 2026

FORT LAUDERDALE TWO DEPARTURE