

GABOW TWO DEPARTURE (RNAV)

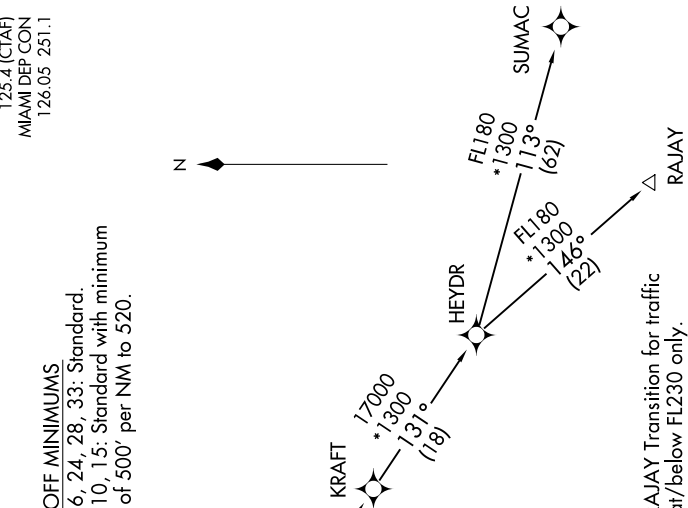
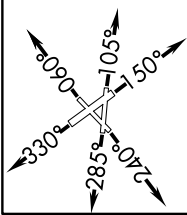
SE-3, 11 JUN 2026 to 09 JUL 2026

ATIS
120.55
GND CON
121.9
POMPANO BEACH TOWER *
125.4 (CTAF)
MIAMI DEP CON
126.05 251.1

RNAV 1 - DME/DME/IRU or GPS.
From KRAFT - GPS.
RADAR required.

TAKEOFF MINIMUMS
Rwys 6, 24, 28, 33: Standard.
Rwys 10, 15: Standard with minimum
climb of 500' per NM to 520.

**TOP ALTITUDE:
ASSIGNED BY ATC**



NOTE: RAJAY Transition for traffic
at/below FL230 only.

▼ DEPARTURE ROUTE DESCRIPTION

TAKEOFF RUNWAY 6: Climb on heading 060° or as assigned by ATC for vectors to cross MNUDO at or above 4000, then...

TAKEOFF RUNWAY 10: Climb on heading 105° or as assigned by ATC for vectors to cross MNUDO at or above 4000, then...

TAKEOFF RUNWAY 15: Climb on heading 150° or as assigned by ATC for vectors to cross MNUDO at or above 4000, then...

TAKEOFF RUNWAY 24: Climb on heading 240° or as assigned by ATC for vectors to cross MNUDO at or above 4000, then...

TAKEOFF RUNWAY 28: Climb on heading 285° or as assigned by ATC for vectors to cross MNUDO at or above 4000, then...

TAKEOFF RUNWAY 33: Climb on heading 330° or as assigned by ATC for vectors to cross MNUDO at or above 4000, then...

... on track 122° to GABOW, (transition). Maintain ATC assigned altitude. Expect clearance to filed altitude ten minutes after departure.

RAJAY TRANSITION (GABOW2.RAJAY)
SANDL TRANSITION (GABOW2.SANDL)
SUMAC TRANSITION (GABOW2.SUMAC)

NOTE: Chart not to scale.

SE-3, 11 JUN 2026 to 09 JUL 2026