

WAAS CH <b>40300</b> <b>W33A</b>	APP CRS <b>330°</b>	Rwy Ldg TDZE <b>16</b> Apt Elev <b>19</b>	<b>4578</b>
--	------------------------	---	-------------

# RNAV (GPS) RWY 33

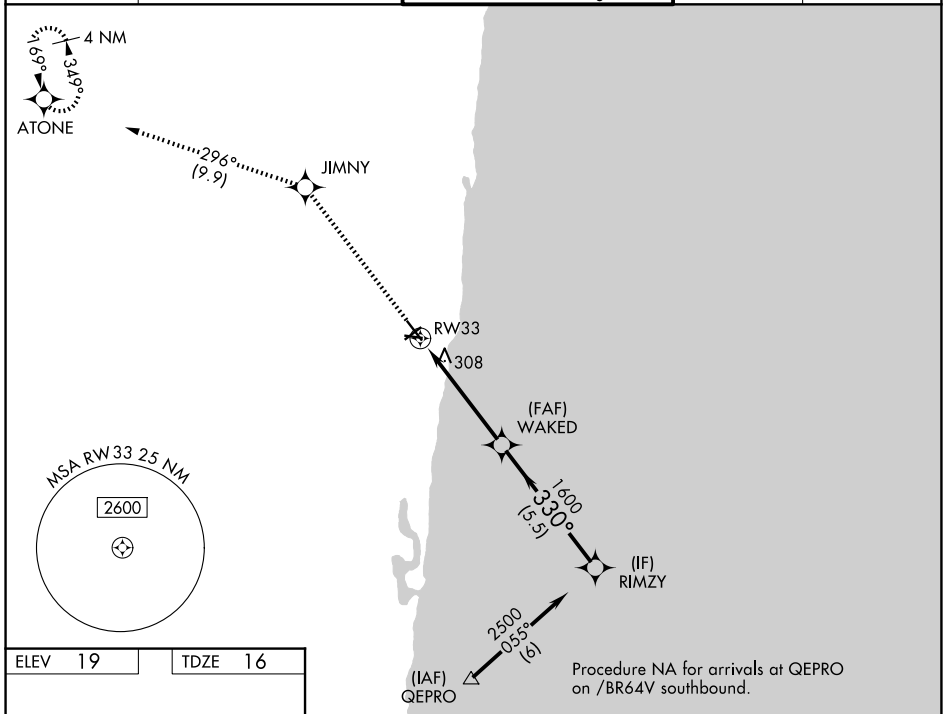
POMPANO BEACH AIRPARK (PMP)

RNP APCH - GPS.

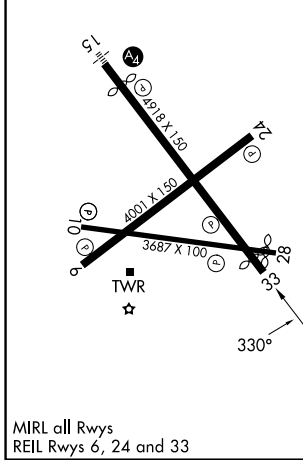
**⚠** Rwy 33 helicopter visibility reduction below  $\frac{3}{4}$  SM NA. For uncompensated Baro-VNAV systems, LNAV/VNAV NA below 0°C or above 54°C. When local altimeter setting not received, use FXE altimeter setting. Circling Rwy 6, 10, 24, 28 NA at night.

**MISSED APPROACH:** Climb to 2100 direct JIMNY and on track 296° to ATONE and hold.

ATIS <b>120.55</b>	MIAMI APP CON <b>119.7 306.3</b>	POMPANO BEACH TOWER * <b>125.4 (CTAF) 0</b>	GND CON <b>121.9</b>	UNICOM <b>122.95</b>
-----------------------	-------------------------------------	--	-------------------------	-------------------------



ELEV 19	TDZE 16
---------	---------



MIRL all Rwys  
REIL Rwys 6, 24 and 33

2100	JIMNY	tr 296°	ATONE	RIMZY
			WAKED	
			1600	2500
			330°	
			1600	
			4.8 NM	5.5 NM
				GP 3.01° TCH 53
CATEGORY	A	B	C	D
LPV DA	266-1	250 (300-1)		NA
LNAV/VNAV DA	701-2	685 (700-2)		NA
LNAV MDA	620-1	604 (700-1)		NA
CIRCLING	660-1	641 (700-1)		NA

SE-3, 11 JUN 2026 to 09 JUL 2026

SE-3, 11 JUN 2026 to 09 JUL 2026