

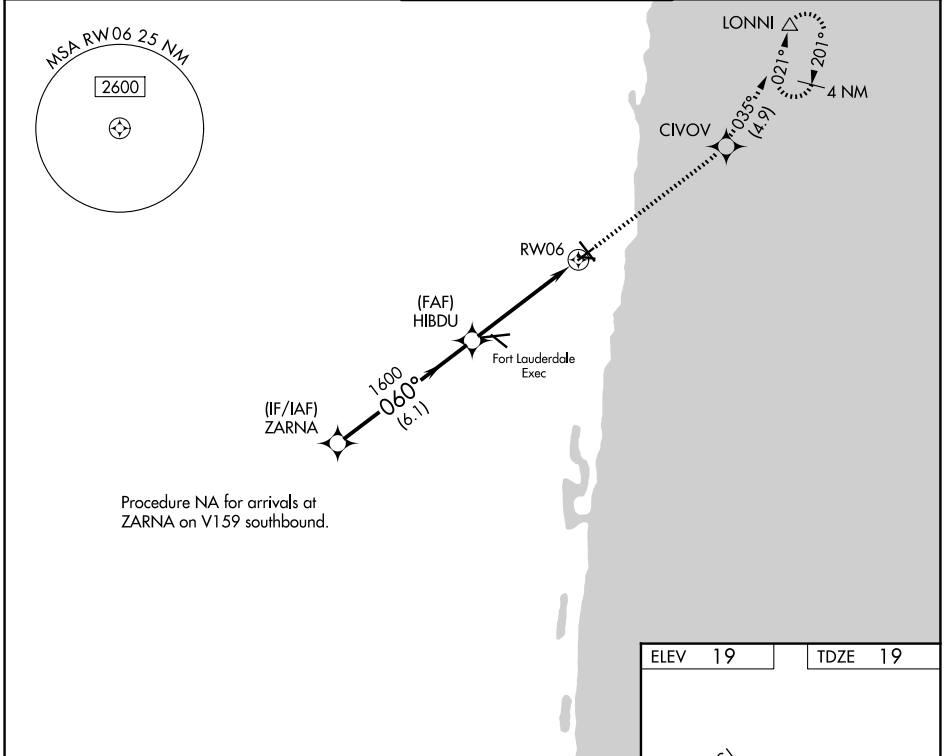
WAAS CH <b>56603</b> <b>W06A</b>	APP CRS <b>060°</b>	Rwy Ldg TDZE Apt Elev	<b>4001</b> <b>19</b> <b>19</b>
--	------------------------	-----------------------------	---------------------------------------

# RNAV (GPS) RWY 6

POMPANO BEACH AIRPARK (PMP)

<b>▽</b> <b>▲</b>	DME/DME RNP-0.3 NA. When local altimeter setting not received, use Fort Lauderdale Exec altimeter setting. Helicopter visibility reduction below 3/4 SM NA.	MISSED APPROACH: Climb to 2000 direct CIVOY and on track 035° to LONNI and hold.
----------------------	---	--

ATIS <b>120.55</b>	MIAMI APP CON <b>119.7 306.3</b>	POMPANO BEACH TOWER * <b>125.4 (CTAF) 0</b>	GND CON <b>121.9</b>	UNICOM <b>122.95</b>
-----------------------	-------------------------------------	--	-------------------------	-------------------------



SE-3, 11 JUN 2026 to 09 JUL 2026

SE-3, 11 JUN 2026 to 09 JUL 2026

Procedure NA for arrivals at ZARNA on V159 southbound.

ELEV 19	TDZE 19
---------	---------

MIRL all Rwy's  
REIL Rwy's 6, 24 and 33

VGSI and RNAV glidepath not coincident (VGSI Angle 3.75/TCH 45). ZARNA	2000	CIVOY	tr 035°	LONNI
2100	HIBDU 2000			
GP 3.00° TCH 39				*LNAV only.
		*1.2 NM to RWY 06		
	6.1 NM	3.6 NM	1.2	

CATEGORY	A	B	C	D
LPV DA	348-1¼	329 (400-1¼)		NA
LNAV MDA	480-1	461 (500-1)		NA
CIRCLING	660-1	641 (700-1)		NA