

VOR EAR 111.2	APP CRS 217°	Rwy Ldg TDZE Apt Elev	N/A N/A 2314
-------------------------	------------------------	-----------------------------	---

VOR-A

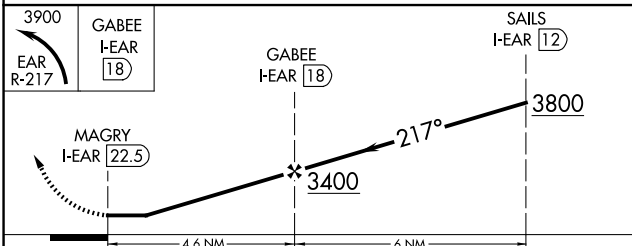
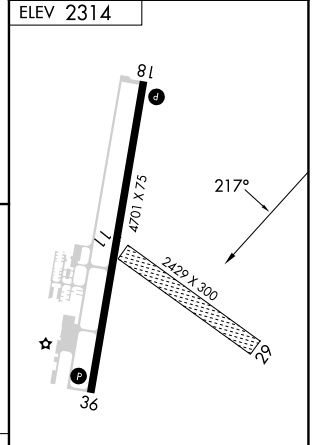
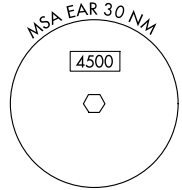
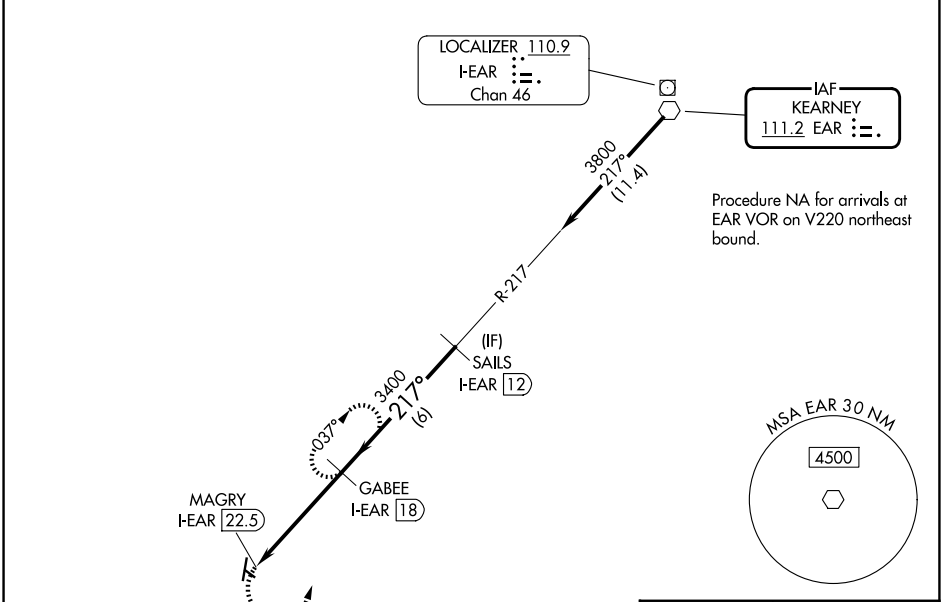
BREWSTER FLD (HDE)

DME required.

⚠ Circling NA to Rwys 11 and 29. When local altimeter setting not received, use EAR altimeter setting and increase all MDAs 80 feet, and all visibilities ¼ SM. DME from I-EAR localizer. Simultaneous reception of EAR VOR and I-EAR DME required.

MISSED APPROACH: Climbing left turn to 3900 on EAR VOR R-217 to GABEE/I-EAR 18 DME and hold, continue climb-in-hold to 3900.

AWOS-3 121.325	DENVER CENTER 132.7 226.675	UNICOM 122.8 (CTAF) 0
--------------------------	---------------------------------------	---------------------------------



CATEGORY	A	B	C	D
CIRCLING	3100-1	786 (800-1)	3100-2¼ 786 (800-2¼)	3100-2½ 786 (800-2½)

MIRL Rwy 18-36 0
REIL Rwys 18 and 36 0

NC-2, 11 JUN 2026 to 09 JUL 2026

NC-2, 11 JUN 2026 to 09 JUL 2026