

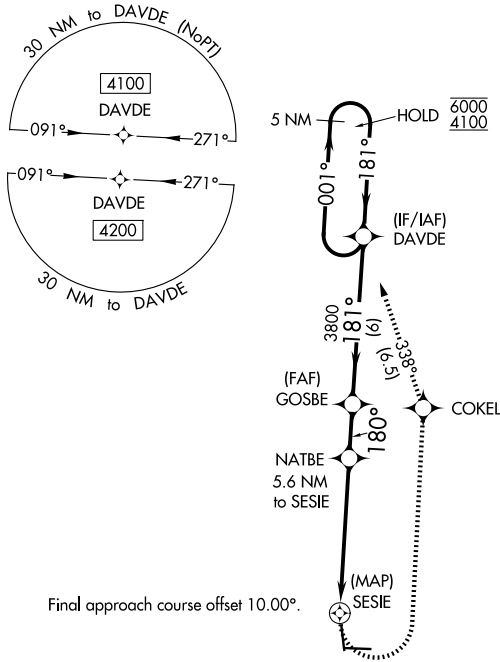
RNAV (GPS) RWY 17

MENA INTERMOUNTAIN MUNI (MEZ)

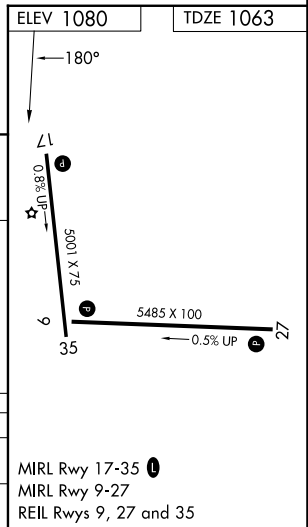
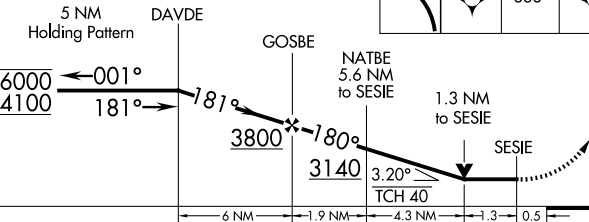
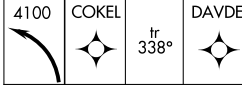
APP CRS 180°	Rwy Ldg TDZE Apt Elev	5001 1063 1080
------------------------	-----------------------------	---

RNP APCH. ▼ Circling Rwy 35 NA at night. ▲ Rwy 17 helicopter visibility reduction below ¾ SM NA.	MISSED APPROACH: Climbing left turn to 4100 direct COKEK and track 338° to DAVDE and hold.
--	--

AWOS-3 118.025	MEMPHIS CENTER 126.1 269.0	UNICOM 122.8 (CTAF) 0
--------------------------	--------------------------------------	---------------------------------



VGSI and descent angles not coincident (VGSI Angle 3.00/TCH 53).



CATEGORY	A	B	C	D
LNVA MDA	1660-1	597 (600-1)	1660-1¼ 597 (600-1¼)	NA
CIRCLING	1840-1 760 (800-1)	2140-1½ 1060 (1100-1½)	2220-3 1140 (1200-3)	NA

MIRL Rwy 17-35
MIRL Rwy 9-27
REIL Rwy 9, 27 and 35

SC-1, 11 JUN 2026 to 09 JUL 2026

SC-1, 11 JUN 2026 to 09 JUL 2026