

WAAS CH <b>49229</b> <b>W29A</b>	APP CRS <b>291°</b>	Rwy Idg TDZE Apt Elev	<b>5091</b> <b>1989</b> <b>1989</b>
--	------------------------	-----------------------------	---

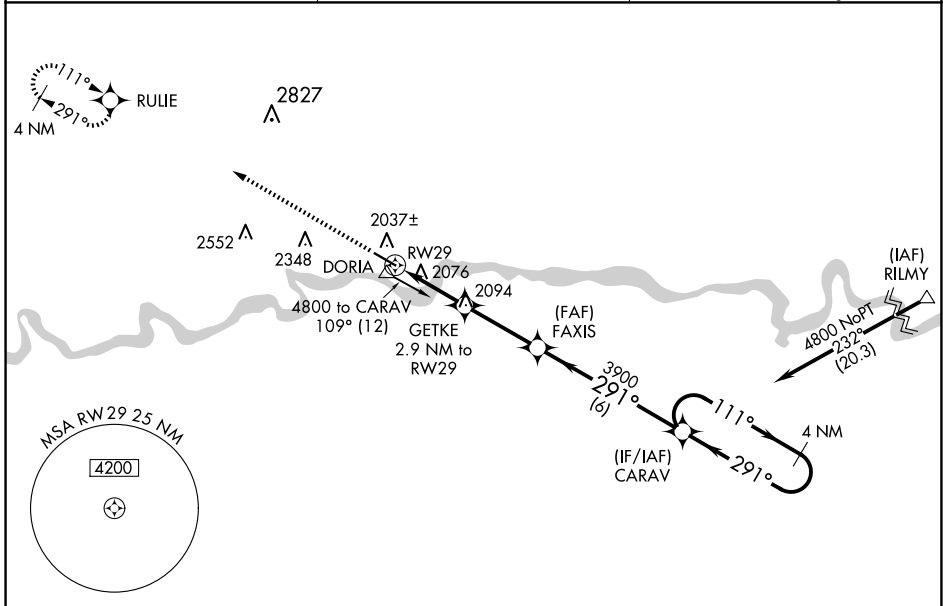
# RNAV (GPS) RWY 29

L M CLAYTON (OLF)

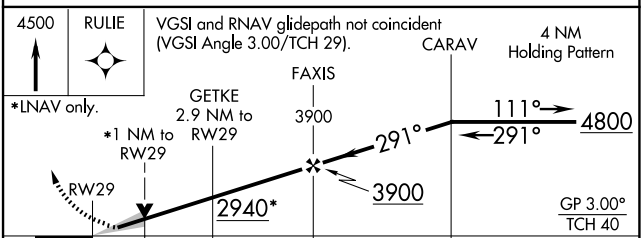
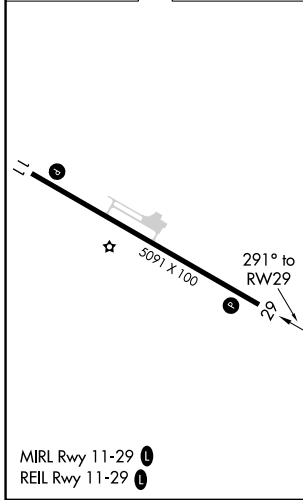
**⚠** For uncompensated Baro-VNAV systems, LNAV/VNAV NA below -18°C (0°F) or above 54°C (130°F). DME/DME RNP-0.3 NA. When local altimeter setting not received, use Wokal FLD/Glasgow-Valley County altimeter setting; increase LPV DA to 2330 ft and visibility 3/8 SM, LNAV/VNAV DA to 2380 ft and visibility 1/2 SM; increase all MDA 160 feet and LNAV and Circling visibility Cat C/D 1/2 SM. Baro-VNAV and VDP NA with Glasgow altimeter setting.

**MISSED APPROACH:**  
Climb to 4500 direct  
RULIE and hold.

ASOS <b>118.325</b>	SALT LAKE CENTER <b>126.85 305.2</b>	UNICOM <b>122.8 (CTAF) 0</b>
------------------------	---	---------------------------------



ELEV 1989	TDZE 1989
-----------	-----------



	A	B	C	D
LPV DA		2189-3/4	200 (200-3/4)	
LNAV/VNAV DA		2239-7/8	250 (300-7/8)	
LNAV MDA		2340-1	351 (400-1)	
CIRCLING	2480-1	491 (500-1)	2660-2 671 (700-2)	2780-2 1/2 791 (800-2 1/2)

NW-1, 11 JUN 2026 to 09 JUL 2026

NW-1, 11 JUN 2026 to 09 JUL 2026