

APP CRS 323°	Rwy Idg 3641
	TDZE 1286
	Apt Elev 1288

RNAV (GPS) RWY 32

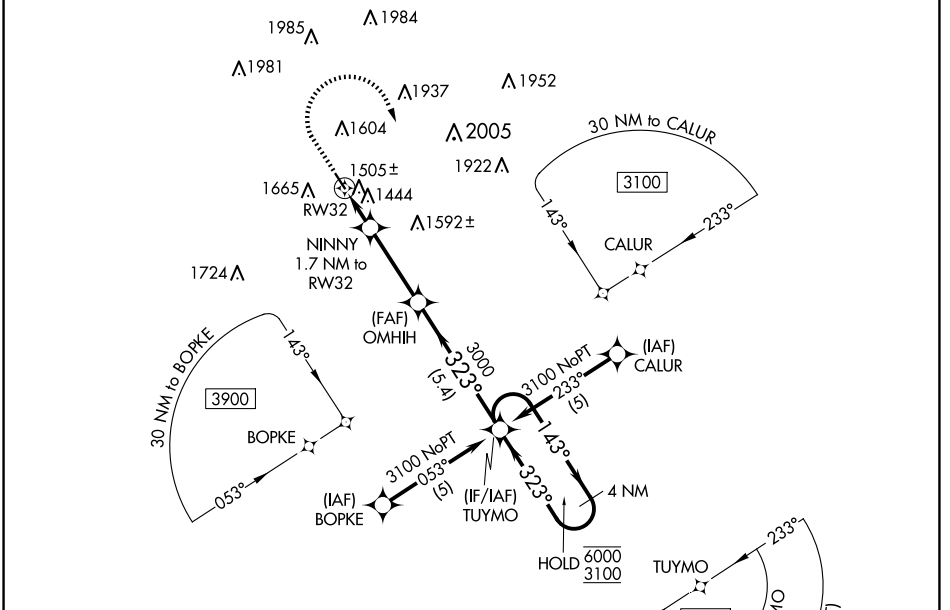
AUDUBON COUNTY (ADU)

RNP APCH - GPS.

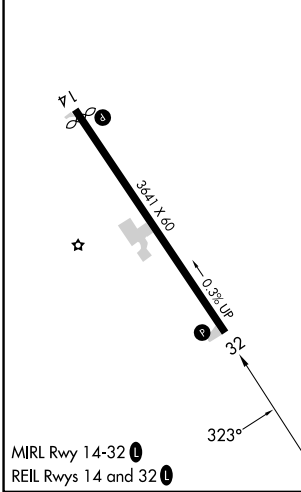
▼ When local altimeter setting not received, procedure NA.
Rwy 32 helicopter visibility reduction below 3/4 SM NA.
Circling Rwy 14 NA at night.

MISSED APPROACH: Climb to 2500 then climbing right turn to 3100 direct TUYMO and hold.

AWOS-3 118.075	MINNEAPOLIS CENTER 119.6 290.4	UNICOM 122.8 (CTAF) ①
--------------------------	--	---------------------------------



ELEV 1288	TDZE 1286
-----------	-----------



2500	3100	TUYMO	TUYMO
↑	↷	✧	✧
NINNY 1.7 NM to RWY 32		OMHIH	TUYMO 4 NM Holding Pattern
RWY 32		3000	6000 / 3100
1.7 NM		3.2 NM	5.4 NM
CATEGORY	A	B	C
LNAV MDA	1760-1	474 (500-1)	NA
CIRCLING	1980-1	692 (700-1)	NA

NC-3, 11 JUN 2026 to 09 JUL 2026

NC-3, 11 JUN 2026 to 09 JUL 2026