

APP CRS  
**201°**

Rwy Ldg **5001**  
TDZE **710**  
Apt Elev **718**

# RNAV (GPS) RWY 20

ELLINGTON (LUG)

RNP APCH-GPS.



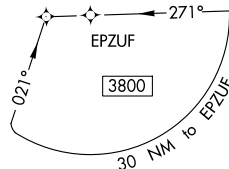
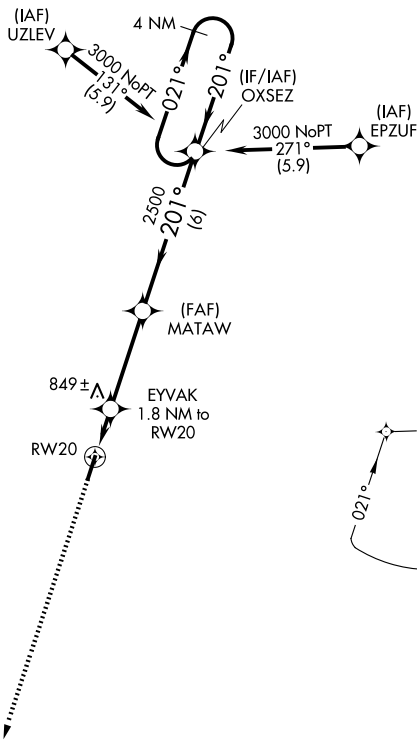
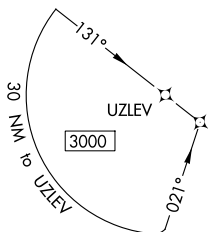
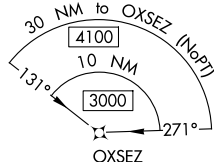
When local altimeter setting not received, use Nashville Intl altimeter setting and increase all MDA 120 feet and visibility LNAV Cats C and D and Circling Cats B and C ¼ SM. Circling to Rwy 2 NA at night. Straight-in to Rwy 20 NA at night, Circling Rwy 20 NA at night. Rwy 20 helicopter visibility reduction below 1 SM NA.

**MISSED APPROACH:**  
Climb to 3000 direct HUROG and hold.

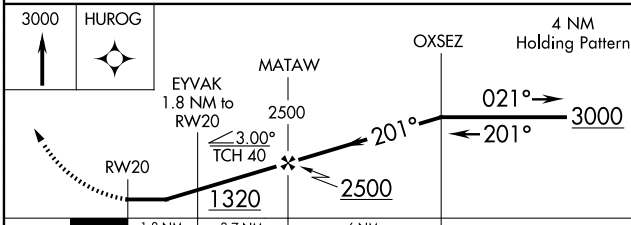
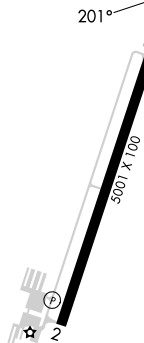
AWOS-3  
**135.775**

MEMPHIS CENTER  
**128.15 323.125**

UNICOM  
**122.8 (CTAF)**



ELEV 718 TDZE 710



CATEGORY	A	B	C	D
LNAV MDA	1100-1	390 (400-1)	1100-1½	390 (400-1½)
CIRCLING	1300-1 582 (600-1)	1480-1 762 (800-1)	1540-2½ 822 (900-2½)	1640-3 922 (1000-3)

REIL Rwy 2 and 20  
MIRL Rwy 2-20

SE-1, 11 JUN 2026 to 09 JUL 2026

SE-1, 11 JUN 2026 to 09 JUL 2026