

APP CRS	Rwy Ldg	4209
322°	TDZE	1313
	Apt Elev	1321

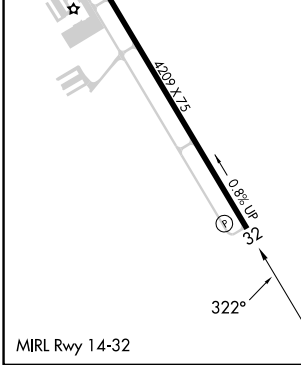
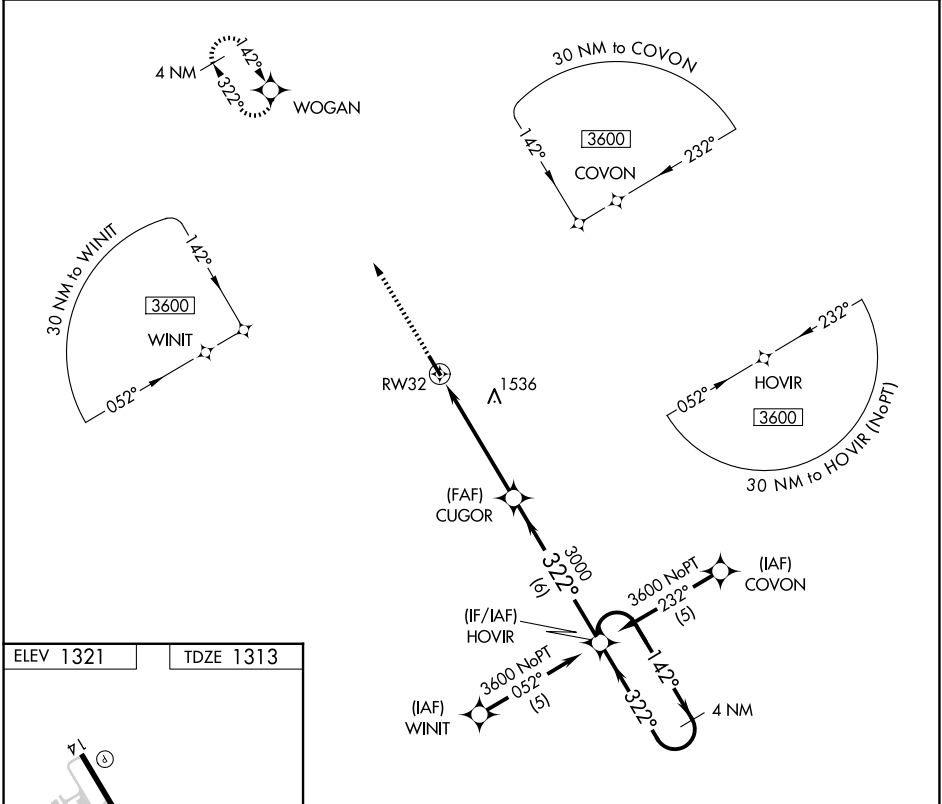
RNAV (GPS) RWY 32

STEPHENVILLE CLARK RGNL (SEP)

⚠ DME/DME RNP-0.3 NA. Rwy 32 helicopter visibility reduction below 1 SM NA. Straight-in Rwy 32 NA at night, circling Rwy 32 NA at night.

⚠ MISSED APPROACH: Climb to 3600 direct WOGAN and hold.

AWOS-3PT 118.075	FORT WORTH CENTER 135.375 354.05	UNICOM 122.8 (CTAF)
----------------------------	--	-------------------------------



3600	WOGAN	HOVIR	4 NM Holding Pattern	
	CUGOR			
RW32	3000	3600	142° → 3600	
	3.04°		← 322°	
	TCH 40			
	5.2 NM	6 NM		
CATEGORY	A	B	C	D
LNAV MDA	1820-1	507 (500-1)	1820-1½	507 (500-1½)
CIRCLING	1820-1	499 (500-1)	2000-2 679 (700-2)	2000-2¼ 679 (700-2¼)

SC-2, 11 JUN 2026 to 09 JUL 2026

SC-2, 11 JUN 2026 to 09 JUL 2026