

APP CRS	Rwy Ldg	<b>6502</b>
<b>134°</b>	TDZE	<b>46</b>
	Apt Elev	<b>46</b>

# RNAV (GPS) RWY 13

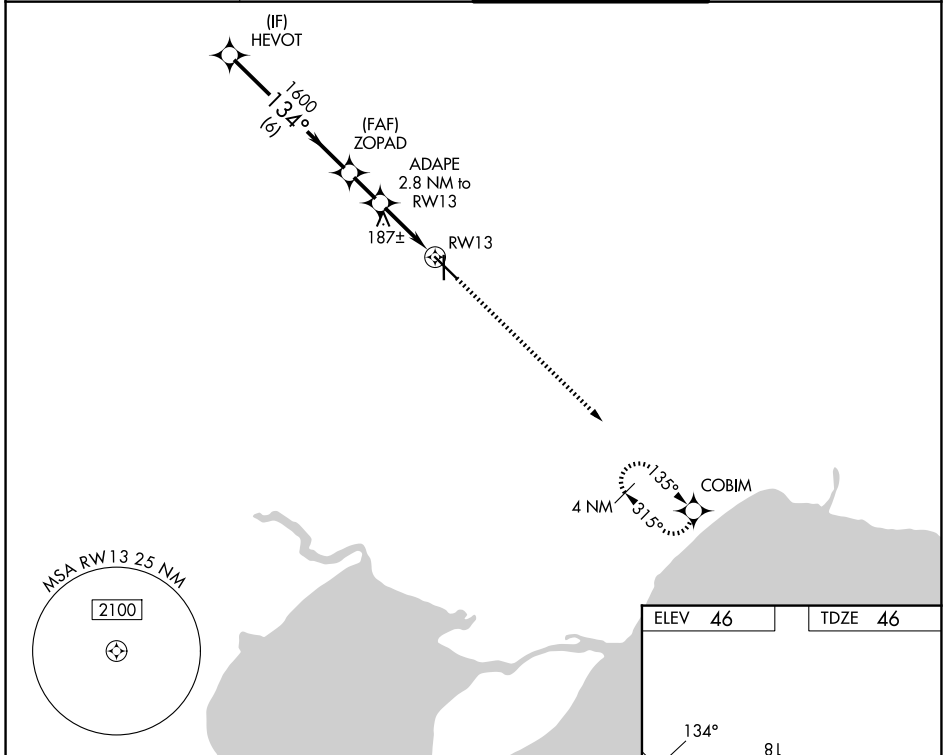
HAMMOND NORTHSORE RGNL (HDC)

RNP APCH - GPS.

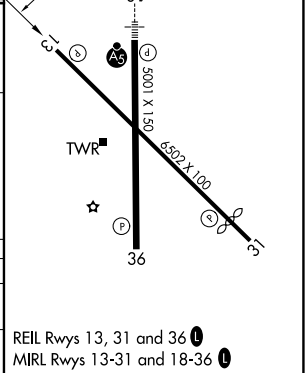
**⚠** Rwy 13 helicopter visibility reduction below ¼ SM NA. VDP NA when using Louis Armstrong New Orleans Intl altimeter setting. When local altimeter setting not received, use Louis Armstrong New Orleans Intl altimeter setting and increase all MDAs 100 feet and LNAV visibility Cat C/D ¼ SM, and Circling visibility Cat C/D ½ SM.

**MISSED APPROACH:**  
Climb to 2000 direct COBIM and hold.

ATIS <b>118.325</b>	NEW ORLEANS APP CON <b>119.3 350.35</b>	HAMMOND TOWER ★ <b>120.575 (CTAF) 0</b>	GND CON <b>119.85</b>
------------------------	--	--	--------------------------



	HEVOT	ZOPAD	ADAPE	RW13	COBIM
	2000	1600	540		2000
	134°		3.30°	1 NM	
	6 NM		1.5 NM	1.8 NM	1 NM
CATEGORY	A	B	C	D	
LNAV MDA	440-1	394 (400-1)	440-1½	394 (400-1½)	
CIRCLING	500-1	454 (500-1)	620-1½ 574 (600-1½)	920-2¾ 874 (900-2¾)	



SC-4, 11 JUN 2026 to 09 JUL 2026

SC-4, 11 JUN 2026 to 09 JUL 2026