

WAAS CH 45818 W18A	APP CRS 180°	Rwy Ldg TDZE Apt Elev	5001 44 46
--	------------------------	-----------------------------	---------------------------------------

RNAV (GPS) RWY 18

HAMMOND NORTHSHORE RGNL (HDC)

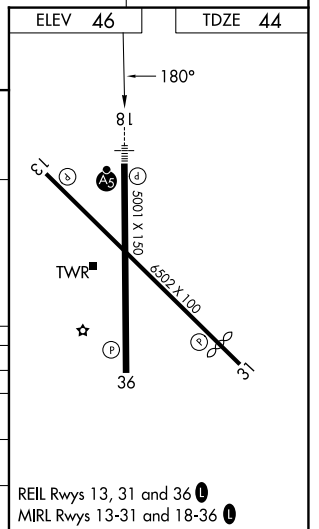
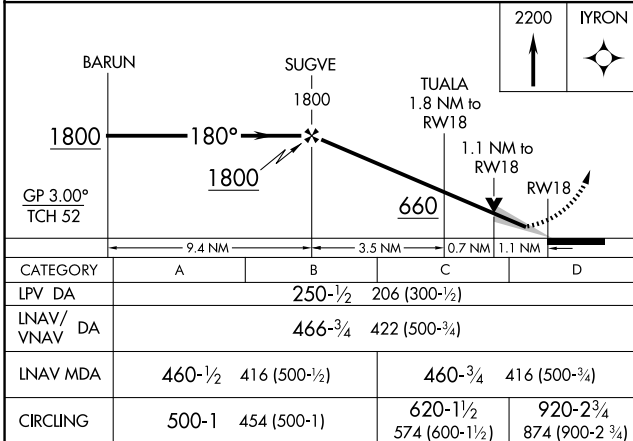
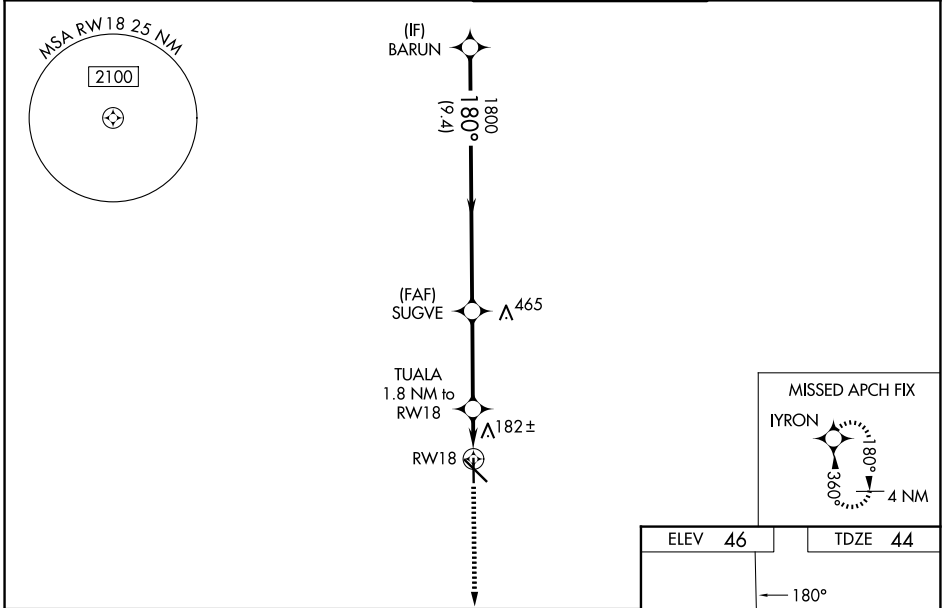
RNP APCH - GPS.

▼ Baro-VNAV and VDP NA when using Louis Armstrong New Orleans Intl altimeter setting. For uncompensated Baro-VNAV systems, LNAV/VNAV NA below -15°C or above 54°C. ▲ When local altimeter setting not received, use Louis Armstrong New Orleans Intl altimeter setting and increase LPV DA to 339 feet; increase LNAV/VNAV DA to 555 feet and all visibilities ¼ SM. Increase all MDAs 100 feet and LNAV visibility Cat C/D ½ SM, and Circling visibility Cat C/D ½ SM. For inop ALS when using Louis Armstrong New Orleans Intl altimeter increase LPV all Cats visibility to ¾ SM; LNAV/VNAV all Cats visibility to 1 ¾ SM and LNAV Cats C/D visibility to 1 ¾ SM. For inop ALS increase LNAV/VNAV all Cats visibility to 1 ¼ SM and LNAV Cat C/D visibility to 1 ¾ SM.

MALSR

MISSED APPROACH:
Climb to 2200 direct
IYRON and hold.

ATIS 118.325	NEW ORLEANS APP CON 119.3 350.35	HAMMOND TOWER ★ 120.575 (CTAF) 0	GND CON 119.85
------------------------	--	--	--------------------------



SC-4, 11 JUN 2026 to 09 JUL 2026

SC-4, 11 JUN 2026 to 09 JUL 2026