

GARLAND SIX DEPARTURE

SC-2, 11 JUN 2026 to 09 JUL 2026

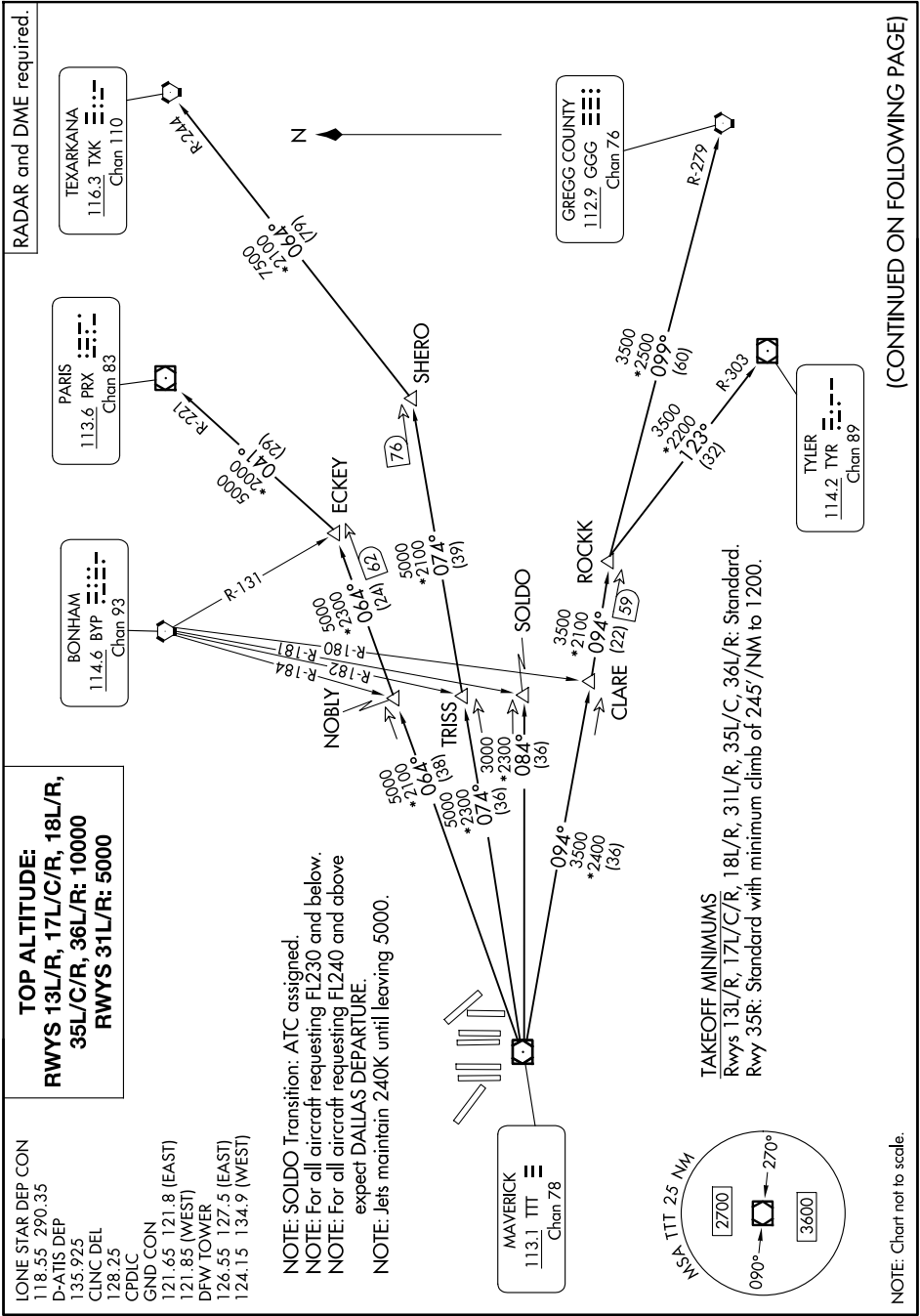
RADAR and DME required.

TOP ALTITUDE:
RWYS 13L/R, 17L/C/R, 18L/R,
35L/C/R, 36L/R: 10000
RWYS 31L/R: 5000

LONE STAR DEP CON
 118.55 290.35
 D-ATIS DEP
 135.925
 CLNC DEL
 128.25
 CPDLC
 GND CON
 121.65 121.8 (EAST)
 121.85 (WEST)
 DFW TOWER
 126.55 127.5 (EAST)
 124.15 134.9 (WEST)

NOTE: SOLDO Transition: ATC assigned.
 NOTE: For all aircraft requesting FL230 and below.
 NOTE: For all aircraft requesting FL240 and above expect DALLAS DEPARTURE.
 NOTE: Jets maintain 240K until leaving 5000.

TAKEOFF MINIMUMS
 Rwys 13L/R, 17L/C/R, 18L/R, 31L/R, 35L/C, 36L/R: Standard.
 Rwy 35R: Standard with minimum climb of 245'/NM to 1200.



(CONTINUED ON FOLLOWING PAGE)

SC-2, 11 JUN 2026 to 09 JUL 2026

GARLAND SIX DEPARTURE

NOTE: Chart not to scale.