

(GRABE8.GRABE) 24305

AL-6039 (FAA)

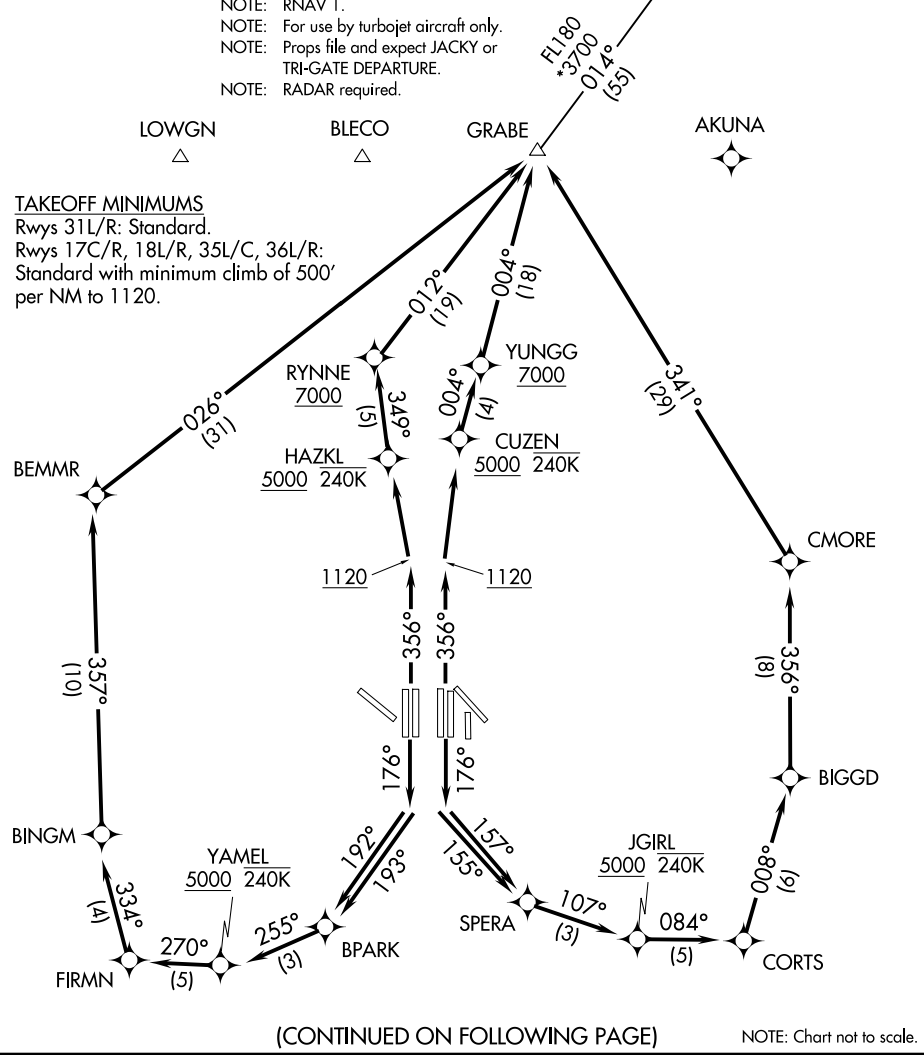
DALLAS-FORT WORTH INTL (DFW)
DALLAS-FORT WORTH, TEXAS

GRABE EIGHT DEPARTURE (RNAV)

TOP ALTITUDE:
RWYS 31L/R: 5000
RWYS 17C/R, 18L/R,
35L/C, 36L/R: 10000

LONE STAR DEP CON
118.55 290.35 (Rwys 17R/C)
126.47 363.15 (Rwys 18L/R)
125.12 353.95 (Rwys 35L/C, 36L/R)
D-ATIS DEP
135.925
CLNC DEL
128.25
CPDLC
GND CON
121.65 121.8 (EAST)
121.85 (WEST)
DFW TOWER
126.55 127.5 (EAST)
124.15 134.9 (WEST)

- NOTE: EAKER Transition: For aircraft inbound to the Tulsa terminal area.
- NOTE: OKMULGEE Transition: For all aircraft overflying the OKM VOR/DME proceeding via J181 to BDF VORTAC then to destinations in the Chicago terminal area and north.
- NOTE: DME/DME/IRU or GPS required.
- NOTE: RNAV 1.
- NOTE: For use by turbojet aircraft only.
- NOTE: Props file and expect JACKY or TRI-GATE DEPARTURE.
- NOTE: RADAR required.



TAKEOFF MINIMUMS

Rwys 31L/R: Standard.
Rwys 17C/R, 18L/R, 35L/C, 36L/R:
Standard with minimum climb of 500'
per NM to 1120.

(CONTINUED ON FOLLOWING PAGE)

NOTE: Chart not to scale.

GRABE EIGHT DEPARTURE (RNAV)

(GRABE8.GRABE) 29MAR18

DALLAS-FORT WORTH, TEXAS
DALLAS-FORT WORTH INTL (DFW)

SC-2, 11 JUN 2026 to 09 JUL 2026

SC-2, 11 JUN 2026 to 09 JUL 2026