

LOC/DME I-FLQ <b>110.3</b> Chan <b>40</b>	APP CRS <b>176°</b>	Rwy Ldg 17C 17R	17C 17R
		TDZE <b>562</b>	<b>567</b>
		Apt Elev <b>607</b>	<b>607</b>

# ILS or LOC RWY 17C

## DALLAS-FORT WORTH INTL (DFW)

DME and RADAR required.

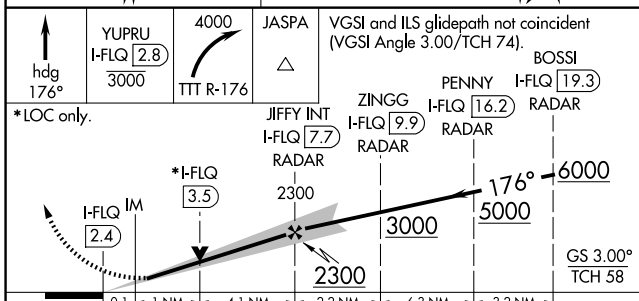
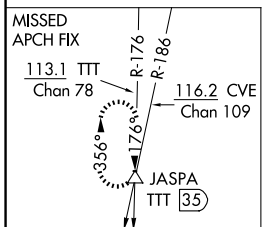
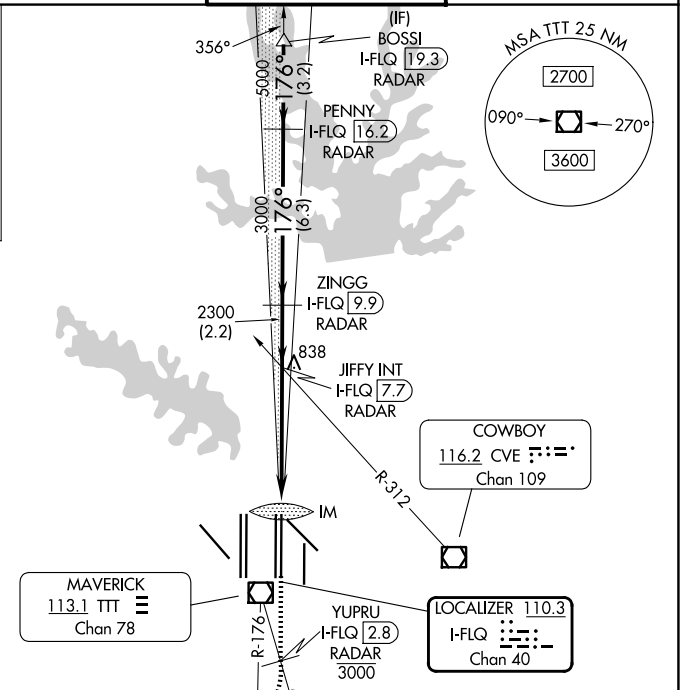
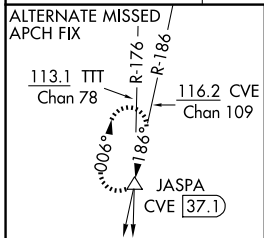
Simultaneous approach authorized with Rwy 17L, 18L/R. Inop table does not apply to sidestep 17R Cats A and B.

Rwy 17C ALSF-2

Rwy 17R MALSR

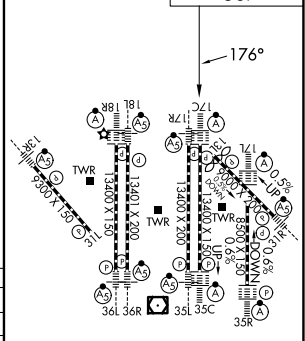
MISSED APPROACH: Climb on heading 176° to cross YUPRU/2.8 DME/RADAR at or below 3000, then climbing right turn to 4000 on TTT VOR/DME R-176 to JASPA/TTT 35 DME and hold.

D-ATIS <b>123.775</b>	LONE STAR APP CON <b>127.075</b>	DFW TOWER <b>126.55 127.5</b> (E) <b>124.15 134.9</b> (W)	GND CON <b>121.65 121.8</b> (E) <b>121.85</b> (W)
--------------------------	-------------------------------------	---	---



CATEGORY	A	B	C	D
S-ILS 17C	762/18		200 (200-1/2)	
S-LOC 17C	1000/24	438 (400-1/2)	1000/40	438 (400-3/4)
SIDESTEP 17R	1140/55 573 (600-1)		1140-1 1/2 573 (600-1 1/2)	

ELEV 607	TDZE 562 17C	TDZE 567 17R
----------	--------------	--------------



HIRL all Rwys  
REIL Rws 13L and 31L  
TDZL/RCLS all Rws except 13L and 31L

SC-2, 11 JUN 2026 to 09 JUL 2026

SC-2, 11 JUN 2026 to 09 JUL 2026